



Loveland

AGRI PRODUCTS

Trial Data

Precept + Adjuvants - Barley

Temora, NSW

Trial Setup

- Fully randomised and replicated plot work - 4 replicates
- Plot size = 10m X 2.5m

Spraying date:	<i>07/07/2015</i>
Growth stage:	<i>Z13 - Z22</i>
Target pest:	<i>Indian Hedge Mustard, Shepherds Purse</i>
Site:	<i>Temora, NSW</i>
Variety:	<i>La Trobe Barley @ 60kg/ ha</i>
GSP:	<i>Precept + Hasten @ 1.0%</i>
Protocol:	<i>Precept 150 +/- Liberate, Hasten, MSO with LECI-TECH or Uptake</i>

© 2020 Loveland Agri Products. Always read and follow label directions.
Liberate is a registered trademark of Loveland Agri Products.

Trial Protocol

Treatment		Applied Rate
T1	Untreated	-
T2	Precept 150 + Liberate	1500mL/ ha + 0.5%
T3	Precept 150 + Hasten	1500mL/ ha + 1.0%
T4	Precept 150 + MSO with LECI-TECH	1500mL/ ha + 1.0%
T5	Precept 150 + Uptake	1500mL/ ha + 0.5%

Precept: 50g/ L Pyrasulfotole + 250g/ L MCPA

© 2020 Loveland Agri Products. Always read and follow label directions.
Liberate is a registered trademark of Loveland Agri Products.

Crop Assessments

Treatment		Applied Rate	Phytotoxicity 7 DAA	Phytotoxicity 14 DAA	Biomass Reduction 7 DAA	Biomass Reduction 14 DAA
T1	Untreated	-	0	0	0	0
T2	Precept 150 + Liberate	1500mL/ ha + 0.5%	0	0	0	0
T3	Precept 150 + Hasten	1500mL/ ha + 1.0%	0	0	0	0
T4	Precept 150 + MSO with LECI-TECH	1500mL/ ha + 1.0%	0	0	0	0
T5	Precept 150 + Uptake	1500mL/ ha + 0.5%	0	0	0	0

© 2020 Loveland Agri Products. Always read and follow label directions.
Liberate is a registered trademark of Loveland Agri Products.

Plant Death % Control - Combined

Treatment		Applied Rate	7 DAA	14 DAA
T1	Untreated	-	0	0
T2	Precept 150 + Liberate	1500mL/ ha + 0.5%	39.48	54.79
T3	Precept 150 + Hasten	1500mL/ ha + 1.0%	33.75	40.00
T4	Precept 150 + MSO with LECI-TECH	1500mL/ ha + 1.0%	37.50	43.75
T5	Precept 150 + Uptake	1500mL/ ha + 0.5%	35.00	53.75
		LSD (P=0.05)	10.57	10.19
		CV	23.3	17.03

© 2020 Loveland Agri Products. Always read and follow label directions.
Liberate is a registered trademark of Loveland Agri Products.

Control % - Shepherds Purse

Treatment		Applied Rate	21 DAA	35 DAA
T1	Untreated	-	0	0
T2	Precept 150 + Liberate	1500mL/ ha + 0.5%	31.22	96.67
T3	Precept 150 + Hasten	1500mL/ ha + 1.0%	26.17	98.75
T4	Precept 150 + MSO with LECI-TECH	1500mL/ ha + 1.0%	21.15	97.50
T5	Precept 150 + Uptake	1500mL/ ha + 0.5%	27.39	98.75
		LSD (P=0.05)	0.104t	3.51
		CV	5.91	2.88

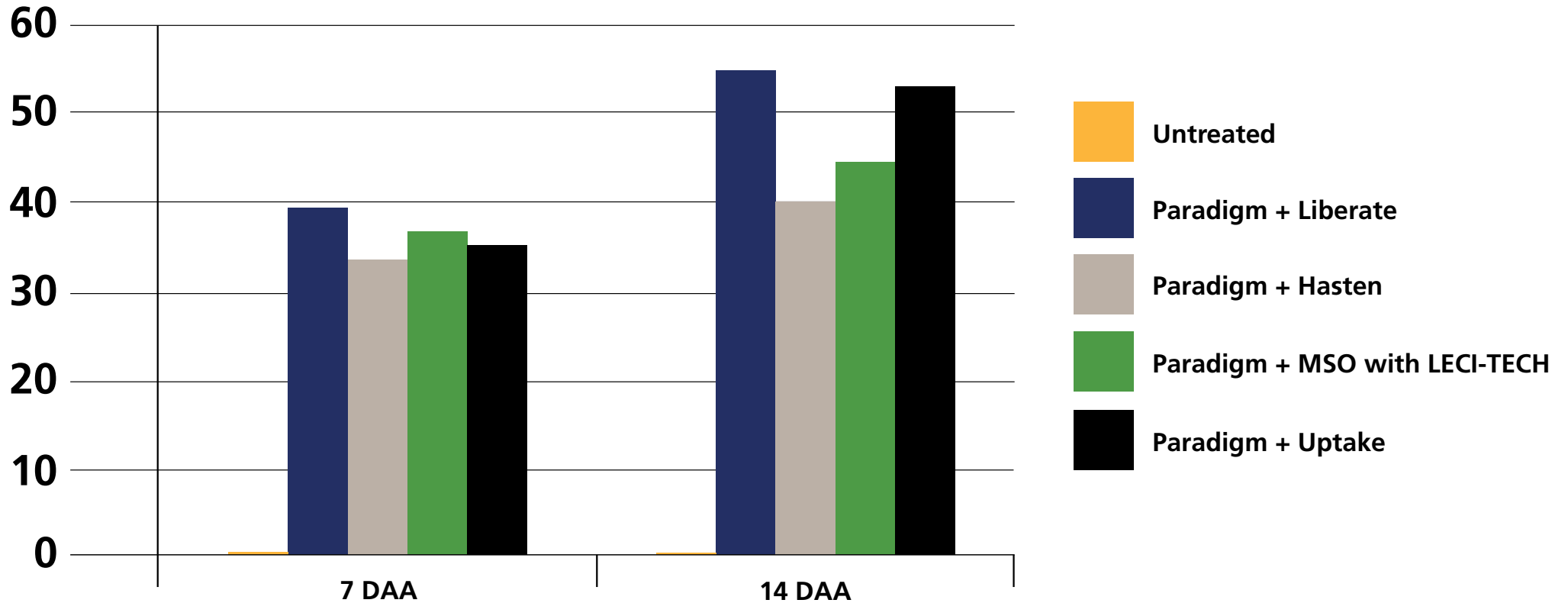
© 2020 Loveland Agri Products. Always read and follow label directions.
Liberate is a registered trademark of Loveland Agri Products.

Control % - IH Mustard

Treatment		Applied Rate	21 DAA	35 DAA
T1	Untreated	-	0	0
T2	Precept 150 + Liberate	1500mL/ ha + 0.5%	81.25	91.88
T3	Precept 150 + Hasten	1500mL/ ha + 1.0%	75.00	92.50
T4	Precept 150 + MSO with LECI-TECH	1500mL/ ha + 1.0%	72.50	93.75
T5	Precept 150 + Uptake	1500mL/ ha + 0.5%	76.25	96.25
		LSD (P=0.05)	5.120	5.819
		CV	5.45	4.99

© 2020 Loveland Agri Products. Always read and follow label directions.
Liberate is a registered trademark of Loveland Agri Products.

Plant Death % Control - Combined



© 2020 Loveland Agri Products. Always read and follow label directions.
Liberate is a registered trademark of Loveland Agri Products.

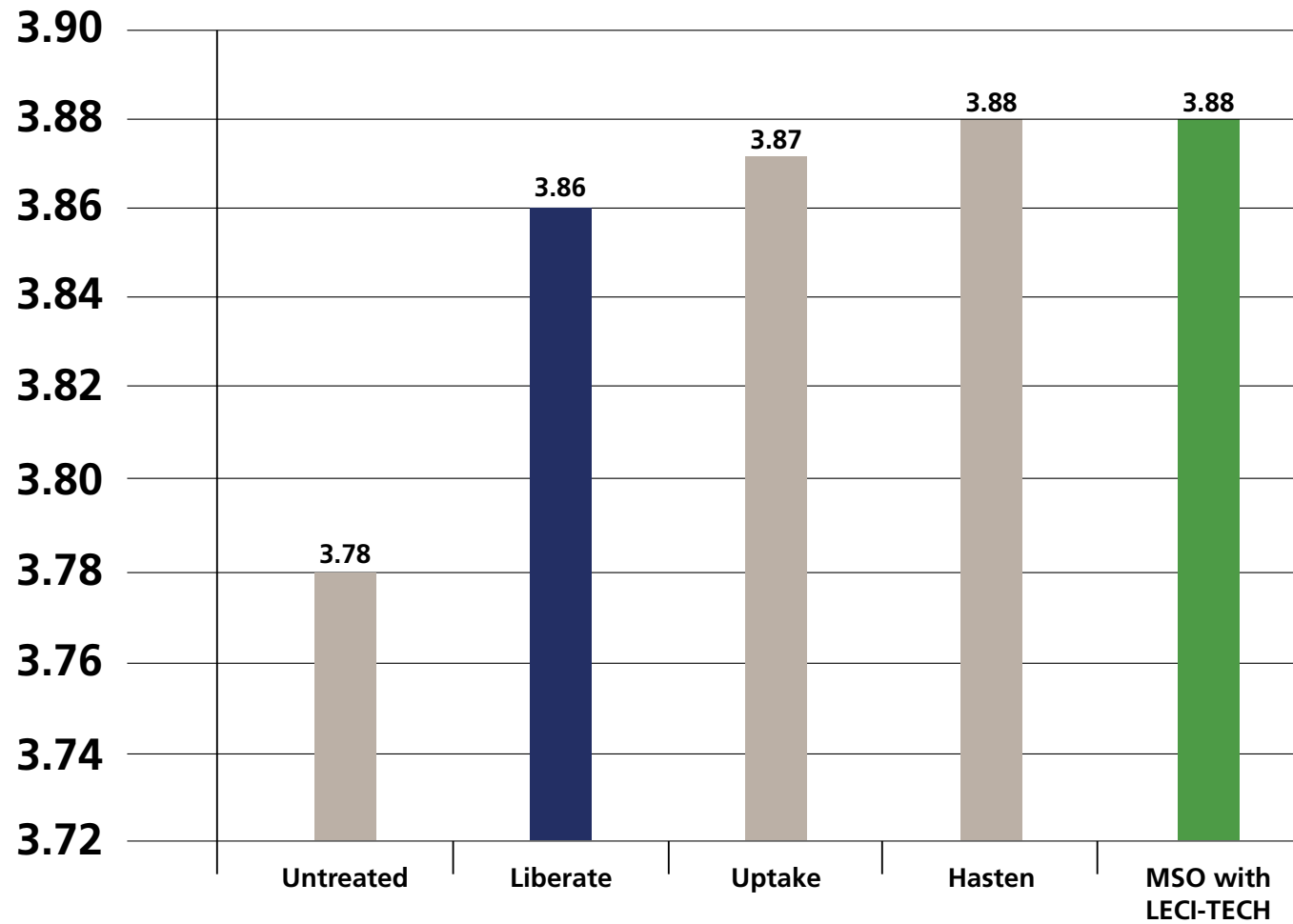
Barley Yield - t/ ha

Treatment		Applied Rate	Yield t/ ha
T1	Untreated	-	3.78
T2	Precept 150 + Liberate	1500mL/ ha + 0.5%	3.86
T3	Precept 150 + Hasten	1500mL/ ha + 1.0%	3.88
T4	Precept 150 + MSO with LECI-TECH	1500mL/ ha + 1.0%	3.88
T5	Precept 150 + Uptake	1500mL/ ha + 0.5%	3.87

LSD (P=0.05) = 0.367 CV = 6.18

© 2020 Loveland Agri Products. Always read and follow label directions.
Liberate is a registered trademark of Loveland Agri Products.

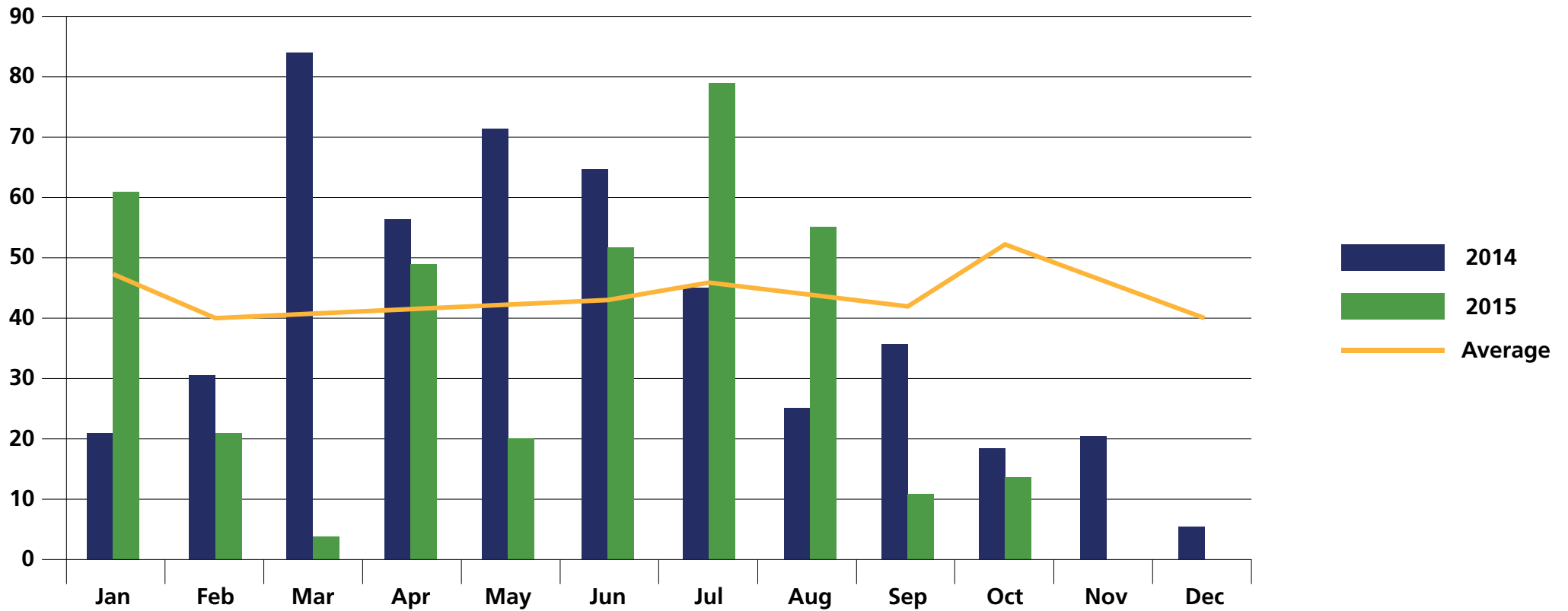
Barley Yield - t/ ha



$LSD (P=0.05) = 0.367$ $CV = 6.18$

© 2020 Loveland Agri Products. Always read and follow label directions.
Liberate is a registered trademark of Loveland Agri Products.

Temora - Rainfall (mm)



© 2020 Loveland Agri Products. Always read and follow label directions.
Liberate is a registered trademark of Loveland Agri Products.

Conclusions

- No phytotoxicity observed
- No biomass reduction observed
- Weeds assessed as % control combined up until 21 days after application, a decision was made to separate Shepherds Purse and Mustard as slight differences were appearing
- Weed population was considered to be low hence the higher than anticipated yield for UTC
- Both Liberate and MSO with LECI-TECH can be considered suitable alternatives to Hasten and Uptake when applied in a tank mix with Precept