



Loveland

AGRI PRODUCTS

Trial Data

MSO with LECI-TECH - Wheat

Temora, NSW

Trial Setup

- Fully randomised and replicated plot work - 4 replicates
- Plot size - 10m X 1.7m

Treatments: *Atlantis (Mesosulfuron-Methyl 30g/ L*

Growth Stage: *Z13 - Z22*

Target Pest: *Annual Ryegrass, Vol. Lupin*

Application date: *07/07/2015*

Site: *Temora, NSW*

Variety: *Suntop Wheat @ 60kg/ ha*

GSP: *Atlantis + BS1000 or Hasten*

Protocol: *Atlantis +/- Liberate, Hasten, MSO with LECI-Tech, BS1000*

© 2020 Loveland Agri Products. Always read and follow label directions.
MSO and LECI-TECH are registered trademarks of Loveland Agri Products.

Trial Protocol

Treatment		Applied Rate / ha
T1	Untreated	-
T2	Atlantis + Liberate	330mL/ ha + 0.25%
T3	Atlantis + Hasten	330mL/ ha + 1.0%
T4	Atlantis + MSO with LECI-TECH	330mL/ ha + 1.0%
T5	Atlantis + BS1000	330mL/ ha + 0.25%

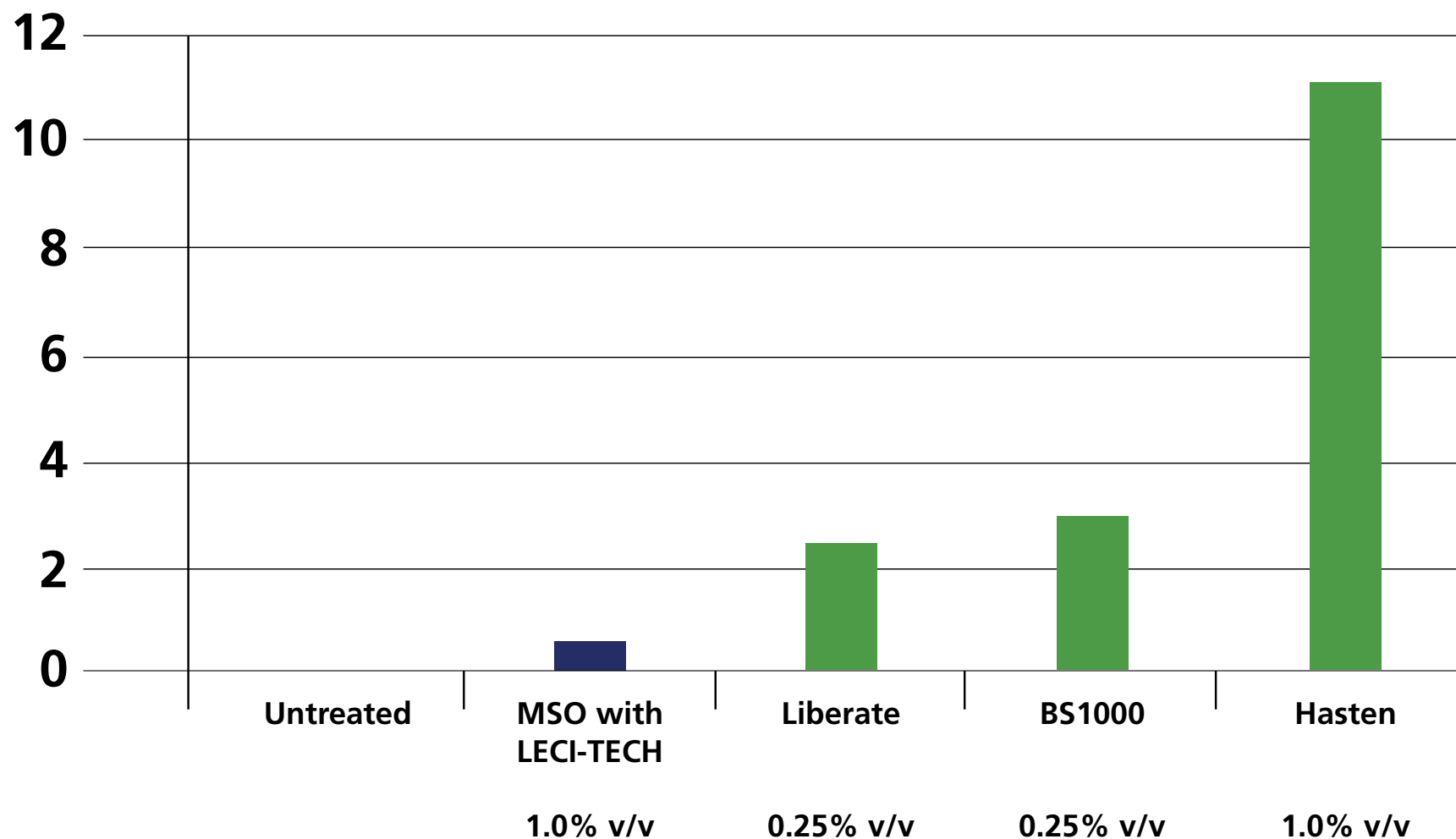
Atlantis: 30g/ L Mesosulfuron - Methyl

Biomass Reduction

Treatment	Applied Rate / ha	17 DAA	24 DAA	45 DAA	59 DAA
Untreated	-	-	0	0	0
Liberate	0.25%	-	2.13	0	0
Hasten	1.0%	-	10.95	0	0
MSO with LECI-TECH	1.0%	-	0.57	0	0
BS1000	0.25%	-	2.83	0	0

© 2020 Loveland Agri Products. Always read and follow label directions.
MSO and LECI-TECH are registered trademarks of Loveland Agri Products.

Biomass Reduction % - 24 DAA



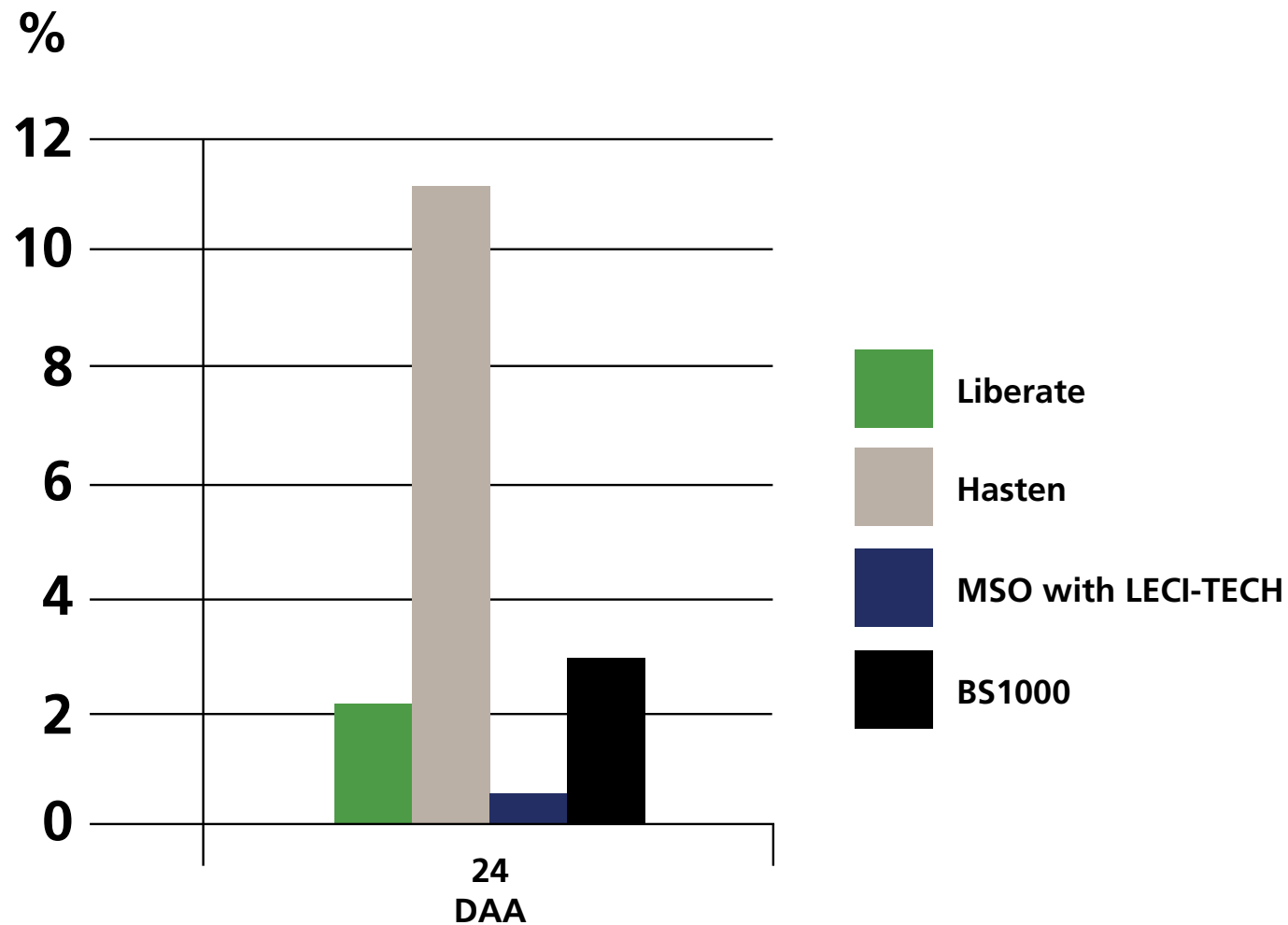
© 2020 Loveland Agri Products. Always read and follow label directions.
MSO and LECI-TECH are registered trademarks of Loveland Agri Products.

Crop Phytotoxicity %

Treatment	Applied Rate / ha	24 DAA	45 DAA	59 DAA
Untreated	-	0	0	0
Liberate	0.25%	2.13	0	0
Hasten	1.0%	10.95	0	0
MSO with LECI-TECH	1.0%	0.57	0	0
BS1000	0.25%	2.83	0	0
	LSD (P=0.05)	0.497		
	CV	67.89		

© 2020 Loveland Agri Products. Always read and follow label directions.
MSO and LECI-TECH are registered trademarks of Loveland Agri Products.

Crop Phytotoxicity %



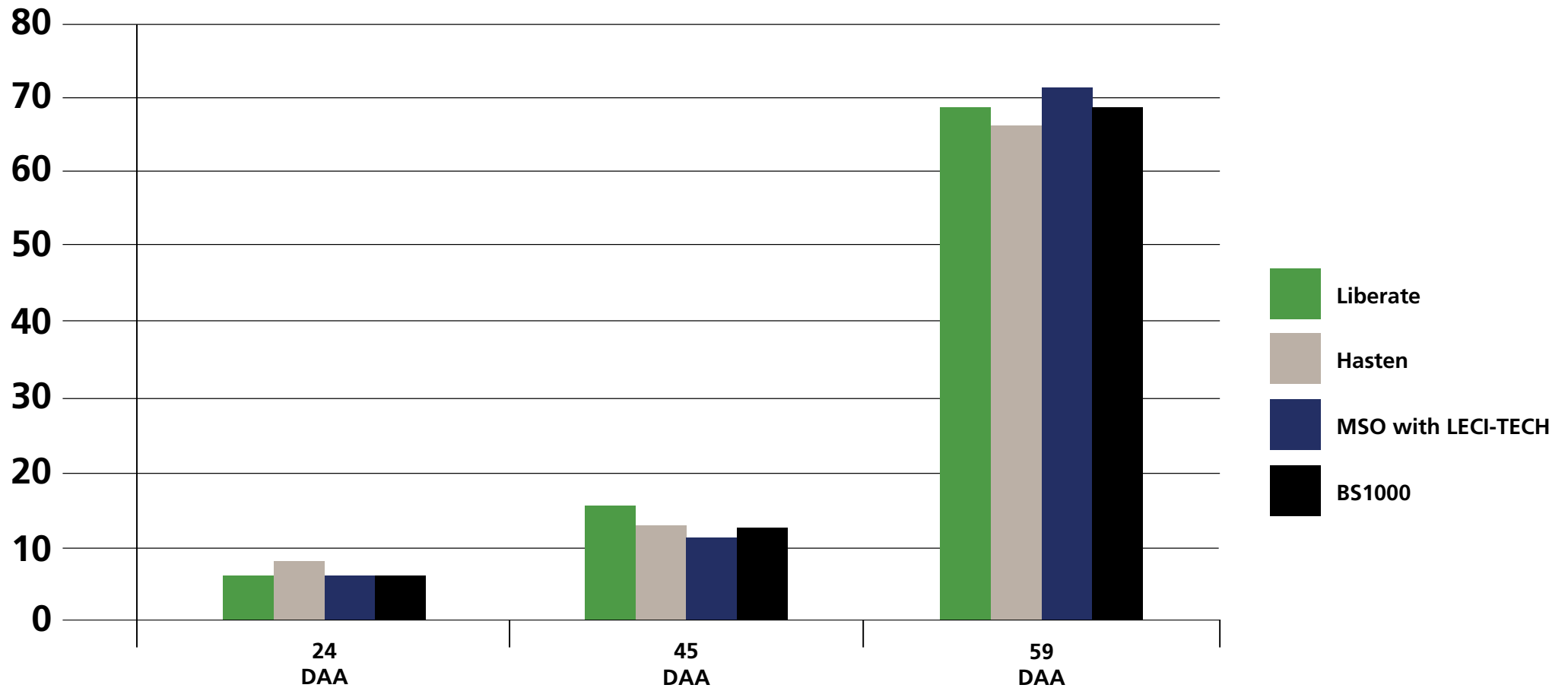
© 2020 Loveland Agri Products. Always read and follow label directions.
MSO and LECI-TECH are registered trademarks of Loveland Agri Products.

Control % - ARG

Treatment	Applied Rate / ha	24 DAA	45 DAA	59 DAA
Untreated	-	0	0	0
Liberate	0.25%	6.25	15	68.75
Hasten	1.0%	8.44	12.6	66.81
MSO with LECI-TECH	1.0%	6.25	11.25	71.25
BS1000	0.25%	6.25	12.5	68.75
	LSD (P=0.05)	3.477	5.331	8.832
	CV	21.75	62.99	7.86

© 2020 Loveland Agri Products. Always read and follow label directions.
MSO and LECI-TECH are registered trademarks of Loveland Agri Products.

Control % - ARG



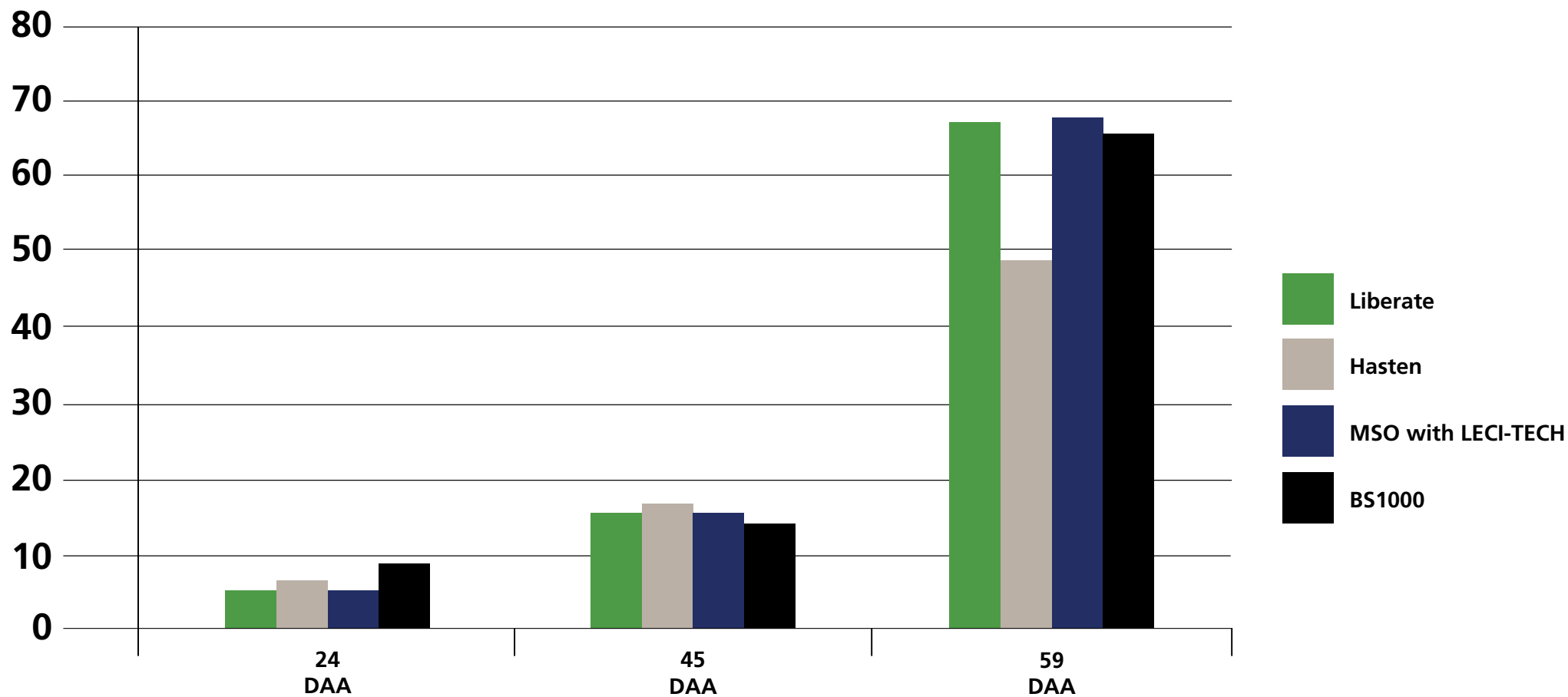
© 2020 Loveland Agri Products. Always read and follow label directions.
MSO and LECI-TECH are registered trademarks of Loveland Agri Products.

Control % - Lupin

Treatment	Applied Rate / ha	24 DAA	45 DAA	59 DAA
Untreated	-	0	0	0
Liberate	0.25%	5.2	15	66.3
Hasten	1.0%	6.0	17.2	48.8
MSO with LECI-TECH	1.0%	5.2	15	67.5
BS1000	0.25%	8.6	13.8	65
	LSD (P=0.05)	5.331	3.477	8.832
	CV	62.99	21.75	7.86

© 2020 Loveland Agri Products. Always read and follow label directions.
MSO and LECI-TECH are registered trademarks of Loveland Agri Products.

Control % - Lupin



© 2020 Loveland Agri Products. Always read and follow label directions.
MSO and LECI-TECH are registered trademarks of Loveland Agri Products.

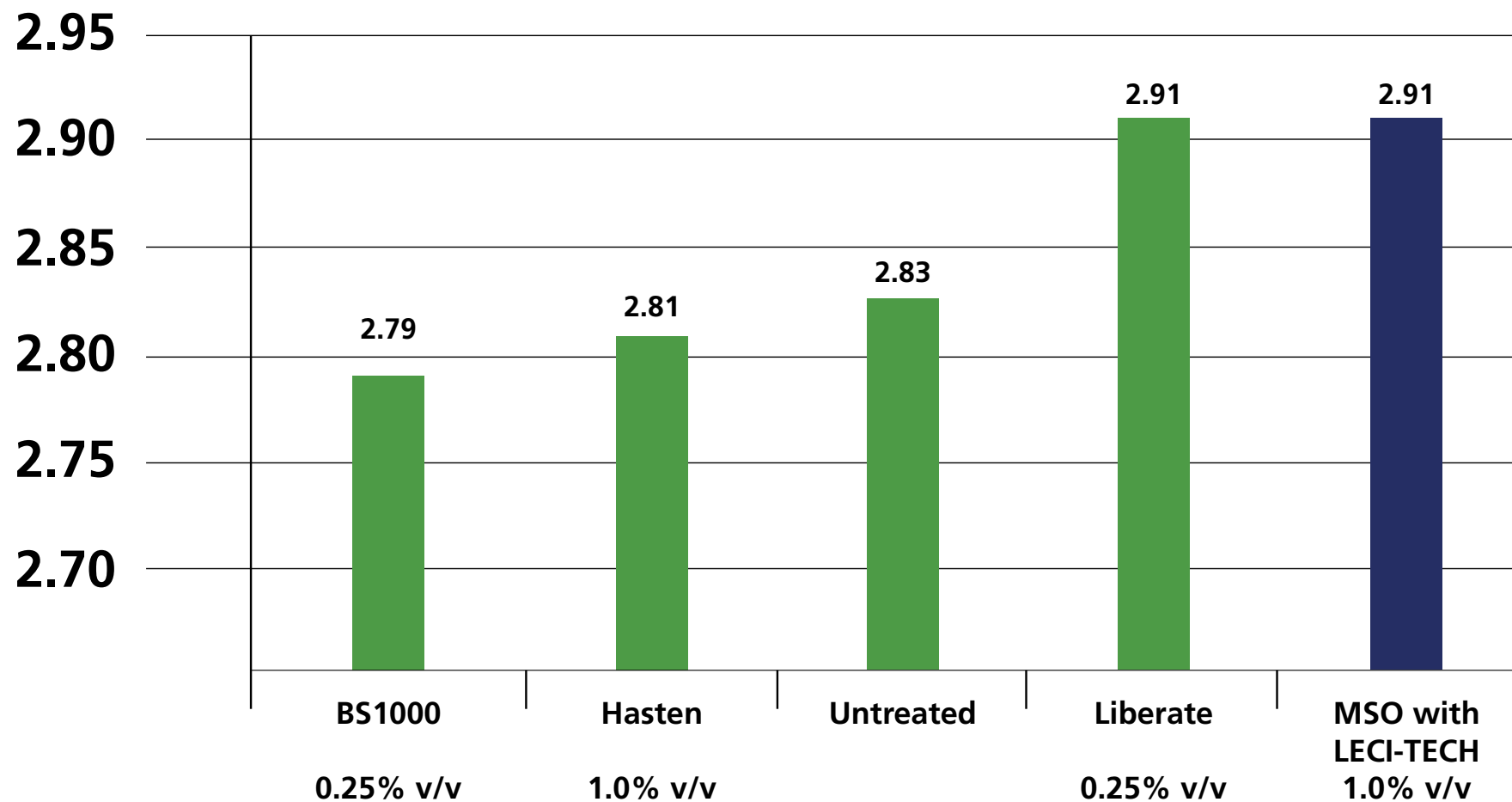
Wheat Yield - t/ ha

Treatment		Applied Rate / ha	Yield t/ ha
T1	Untreated	-	2.83
T2	Atlantis + Liberate	330mL/ ha + 0.25%	2.91
T3	Atlantis + Hasten	330mL/ ha + 1.0%	2.81
T4	Atlantis + MSO with LECI-TECH	330mL/ ha + 1.0%	2.91
T5	Atlantis + BS1000	330mL/ ha + 0.25%	2.79

LSD (P=0.05) = 0.467 CV = 10.65

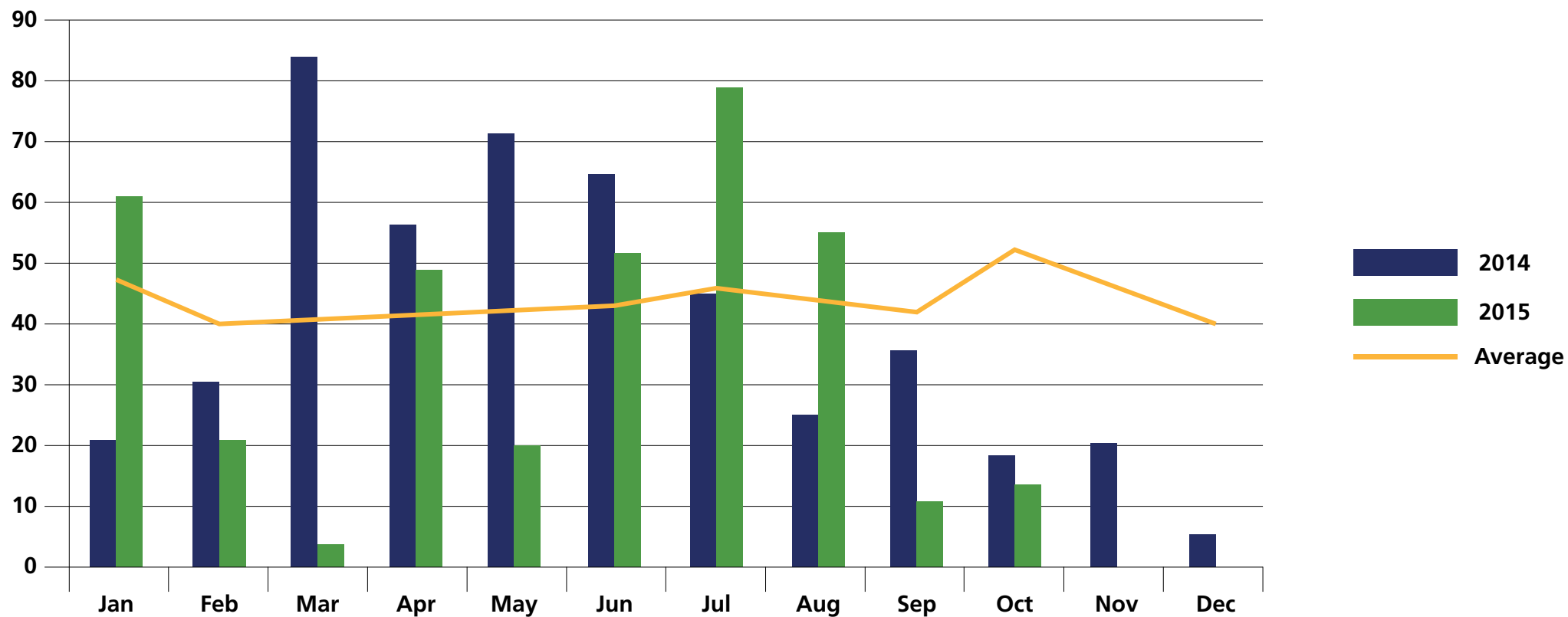
© 2020 Loveland Agri Products. Always read and follow label directions.
MSO and LECI-TECH are registered trademarks of Loveland Agri Products.

Wheat Yield - t/ ha



© 2020 Loveland Agri Products. Always read and follow label directions.
MSO and LECI-TECH are registered trademarks of Loveland Agri Products.

Temora - Rainfall (mm)



© 2020 Loveland Agri Products. Always read and follow label directions.
MSO and LECI-TECH are registered trademarks of Loveland Agri Products.

Conclusions

- Hasten showed significant phytotoxicity at 24 days after application, but grew out of it later in the season
- Hasted had the highest biomass reduction at 11%, with Liberate and MSO with LECI-TECH lower than 2%
- Atlantis was very slow in controlling the annual ryegrass due to cold weather
- Hasten did not control lupins nearly as well as the other treatments