



Loveland

AGRI PRODUCTS

Trial Data

MSO with LECI-TECH - Wheat

Mimosa, NSW

Trial Setup

- Fully randomised and replicated plot work - 4 replicates
- Plot size - 10m X 2.5m

Treatments: *Atlantis + Adjuvants (Liberate, Hasten, MSO, BS1000)*

Seeding date: *06/05/2015*

Application date: *21/07/2015*

Site: *Mimosa, NSW*

Variety: *Corack Wheat @ 60kg/ ha*

GSP: *MAP @ 90kg/ ha + Urea 100kg/ ha top dressed*

Protocol: *Atlantis @ 330mL/ ha + Hasten @ 1.0%*

Trial Protocol

Treatment		Applied Rate / ha
T1	Untreated	-
T2	Atlantis + Liberate	330mL/ ha + 0.5%
T3	Atlantis + Hasten	330mL/ ha + 1.0%
T4	Atlantis + MSO with LECI-TECH	330mL/ ha + 1.0%
T5	Atlantis + BS1000	330mL/ ha + 0.25%

© 2020 Loveland Agri Products. Always read and follow label directions.
MSO and LECI-TECH are registered trademarks of Loveland Agri Products.

Wheat - Phytotoxicity

Treatment	Applied Rate / ha	14 DAA	21 DAA	35 DAA	48 DAA
Untreated	-	0	0	0	0
Liberate	0.5%	0	0	0	0
Hasten	1.0%	0	0	0	0
MSO with LECI-TECH	1.0%	0	0	0	0
BS1000	0.25%	0	0	0	0

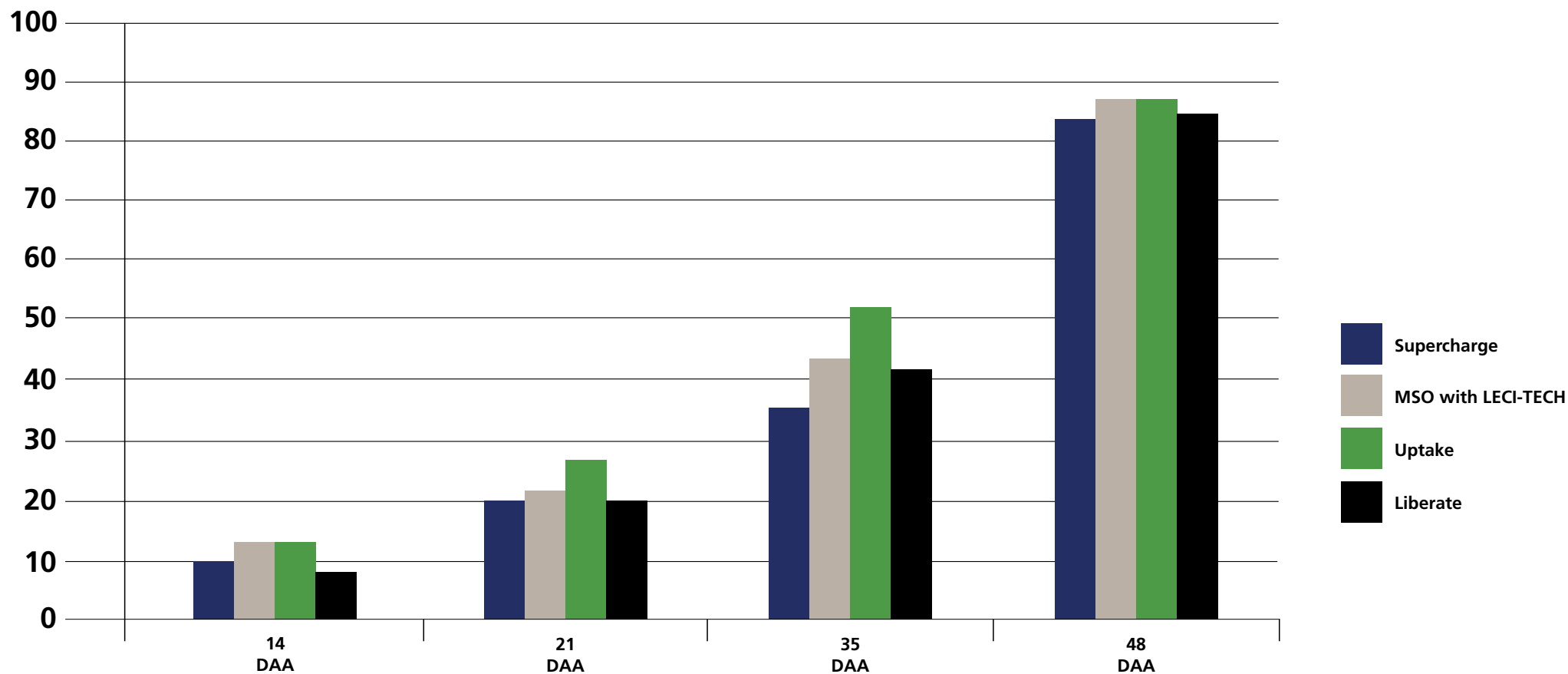
© 2020 Loveland Agri Products. Always read and follow label directions.
MSO and LECI-TECH are registered trademarks of Loveland Agri Products.

Wild Oats Control %

Treatment	Applied Rate / ha	14 DAA	21 DAA	35 DAA	48 DAA
Untreated	-	0	0	0	0
Liberate	0.5%	10	20	35	83
Hasten	1.0%	13.75	22.5	43.75	87.61
MSO with LECI-TECH	1.0%	13.75	27.5	51.25	87.61
BS1000	0.25%	8.75	20	41.25	83.99
	LSD (P=0.05)	5.67	5.967	14.223	4.909
	CV	39.78	21.52	26.95	5.82

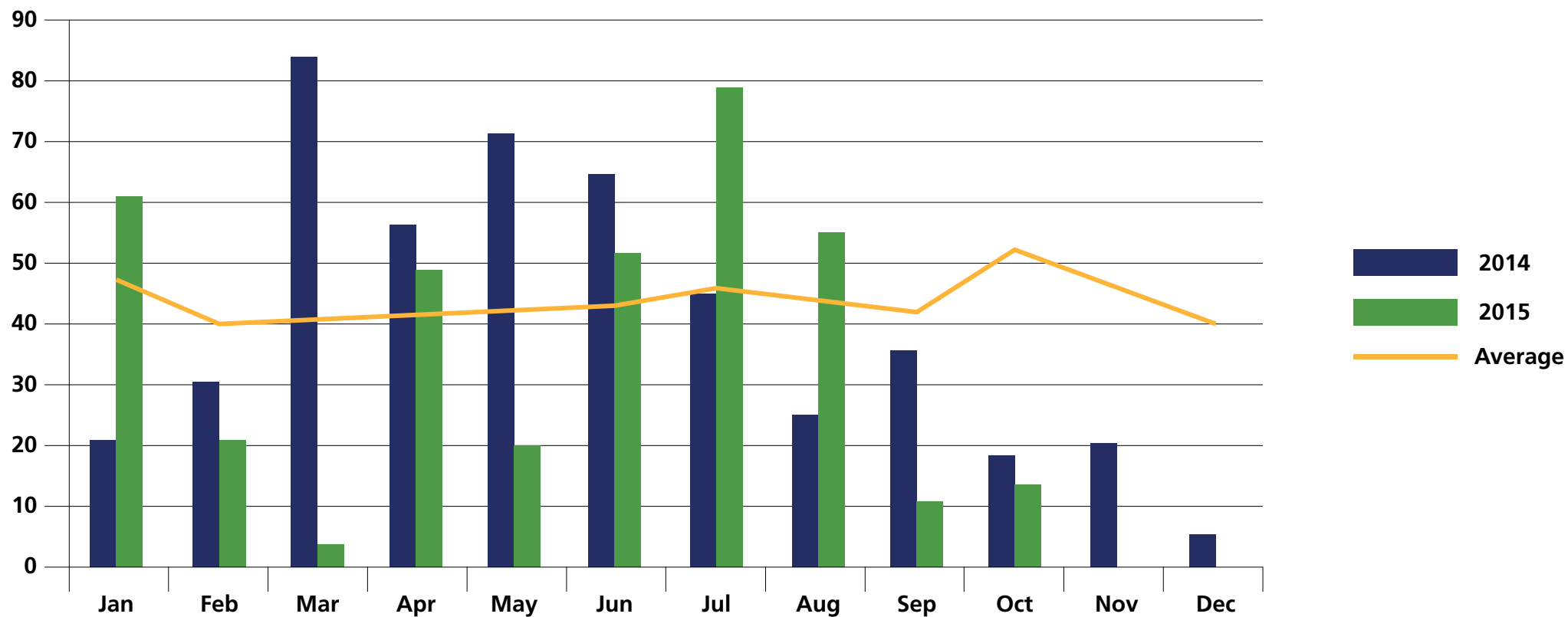
© 2020 Loveland Agri Products. Always read and follow label directions.
MSO and LECI-TECH are registered trademarks of Loveland Agri Products.

Wild Oats Control %



© 2020 Loveland Agri Products. Always read and follow label directions.
MSO and LECI-TECH are registered trademarks of Loveland Agri Products.

Temora - Rainfall (mm)



© 2020 Loveland Agri Products. Always read and follow label directions.
MSO and LECI-TECH are registered trademarks of Loveland Agri Products.

Conclusions

- MSO with LECI-TECH has the highest visual rating for plant death at 48 days after application
- No biomass reduction or phytotoxicity was observed at all
- Trial was not harvested due to location and accessibility
- MSO with LECI-TECH was similar to Hasten and better than BS1000 for Wild Oat control at all assessments