



Loveland
AGRI PRODUCTS

Trial Data

Achieve + Adjuvants - Wheat

Mimosa, NSW

Trial Setup

- Fully randomised and replicated plot work - 4 replicates
- Plot size - 10m X 2.5m

Treatments: *Achieve + Adjuvants (Liberate, Hasten, MSO with LECI-TECH, Supercharge)*

Application date: *21/07/2015*

Site: *Mimosa, NSW*

Variety: *Corack Wheat @ 60kg/ ha*

GSP: *MAP @ 90kg/ ha + Urea @ 100kg/ ha top dressed*

Protocol: *Achieve @ 400gm/ ha + Supercharge @ 0.75%*

Trial Protocol

Treatment			Applied Rate / ha
T1	Untreated	-	-
T2	Liberate	0.5%	Achieve @ 400gm/ ha
T3	Hasten	1.0%	Achieve @ 400gm/ ha
T4	MSO with LECI-TECH	1.0%	Achieve @ 400gm/ ha
T5	Supercharge	0.75%	Achieve @ 400gm/ ha

© 2020 Loveland Agri Products. Always read and follow label directions.
LECI-TECH is a registered trademark of Loveland Agri Products.

Wheat - Phytotoxicity

Treatment		14 DAA	21 DAA	35 DAA	48 DAA
Untreated	-	0	0	0	0
Liberate	0.5%	0	0	0	0
Hasten	1.0%	0	0	0	0
MSO with LECI-TECH	1.0%	0	0	0	0
Supercharge	0.75%	0	0	0	0

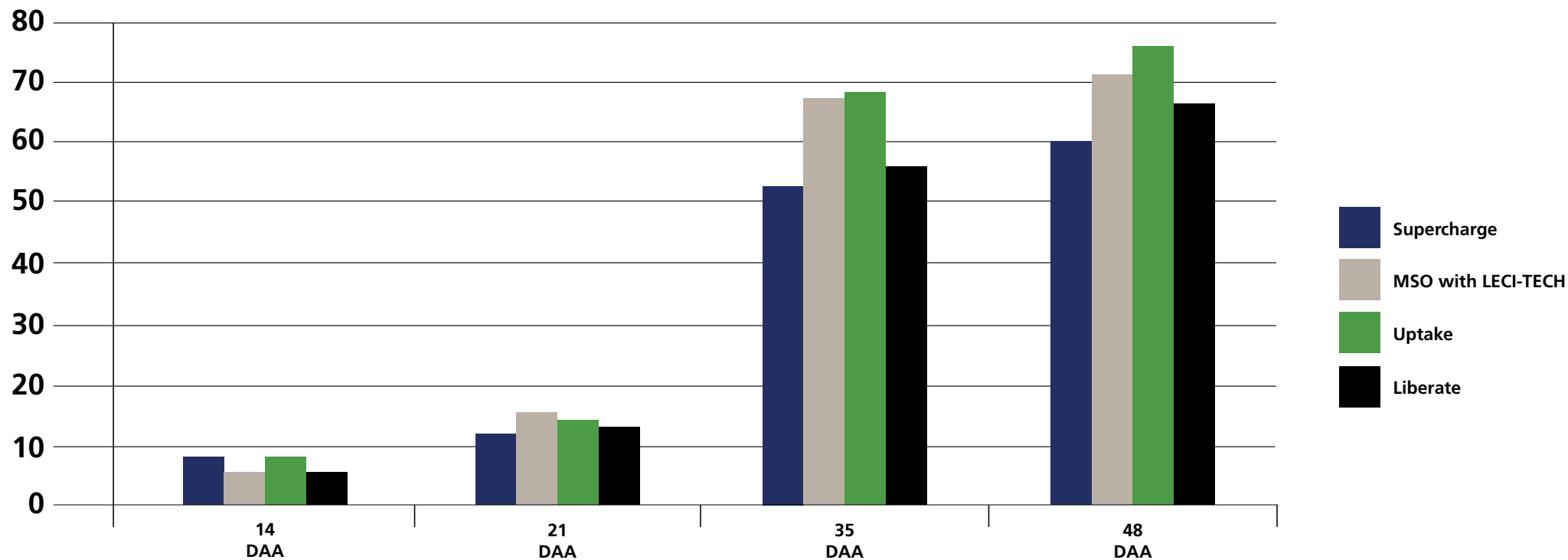
© 2020 Loveland Agri Products. Always read and follow label directions.
LECI-TECH is a registered trademark of Loveland Agri Products.

Achieve - Wild Oats Control %

Treatment		14 DAA	21 DAA	35 DAA	48 DAA
Untreated	-	0	0	0	0
Liberate	0.5%	8.75	11.25	52.5	60
Hasten	1.0%	5	15	67.5	71.25
MSO with LECI-TECH	1.0%	8.75	13.75	68.75	75
Supercharge	0.75%	5	12.5	55	66.25
	LSD (P=0.05)	6.171	4.161	24.904	14.361
	CV	72.82	25.72	33.16	17.1

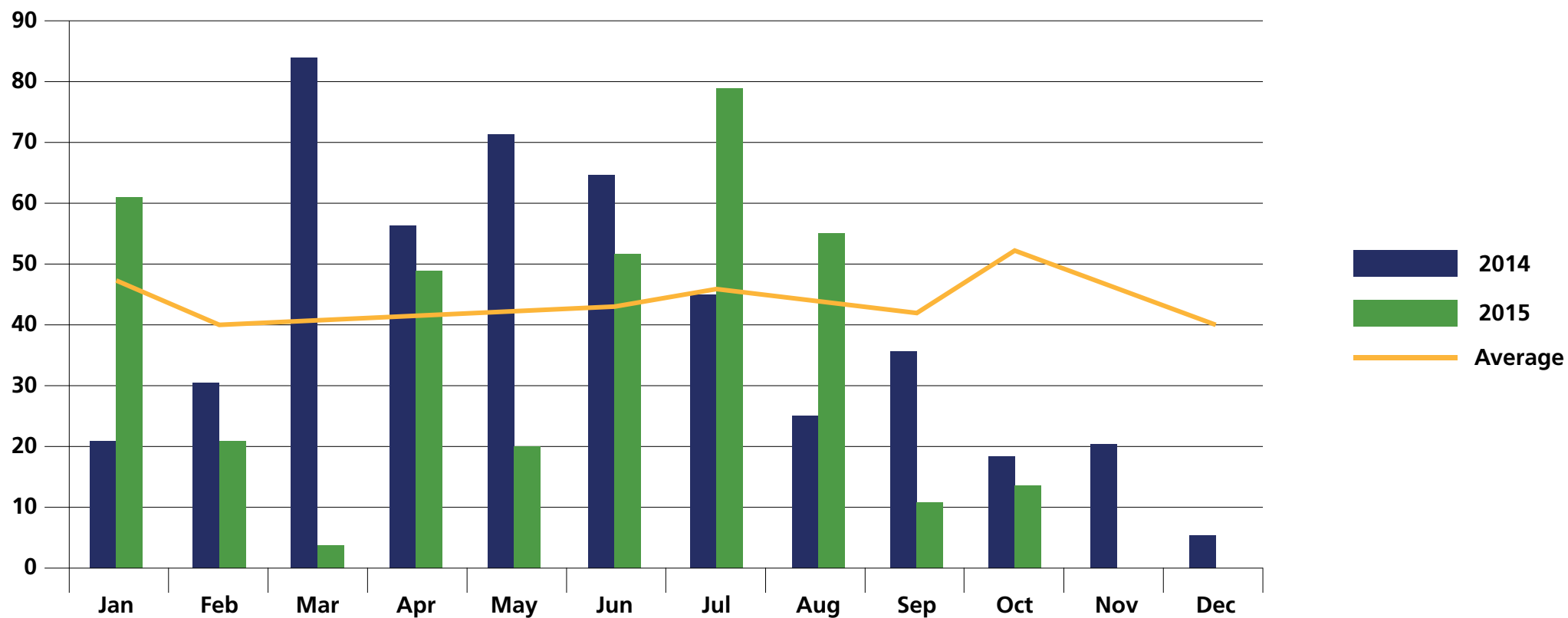
© 2020 Loveland Agri Products. Always read and follow label directions.
LECI-TECH is a registered trademark of Loveland Agri Products.

Achieve - Wild Oats Control %



© 2020 Loveland Agri Products. Always read and follow label directions.
LECI-TECH is a registered trademark of Loveland Agri Products.

Temora - Rainfall (mm)



© 2020 Loveland Agri Products. Always read and follow label directions.
LECI-TECH is a registered trademark of Loveland Agri Products.

Conclusions

- MSO with LECI-TECH had the highest visual rating for plant death at 48 days after application
- No biomass reduction or phytotoxicity was observed at all
- Trial was not harvested due to location and accessibility
- MSO with LECI-TECH had a 4% higher plant death when compared to Hasten and Supercharge