



Loveland

AGRI PRODUCTS

Trial Data

Achieve + Adjuvants - Wheat

Temora, NSW

Trial Setup

- Fully randomised and replicated plot work - 4 replicates
- Plot size = 10m X 1.7m

Spraying date: *07/07/15*

Growth stage: *Z13 - Z22*

Target pest: *Annual Ryegrass*

Site: *Temora, NSW*

Variety: *Suntop Wheat @ 60kg/ ha*

GSP: *Achieve + Supercharge*

Protocol: *Achieve +/- Liberate, Hasten, MSO with LECI-TECH, Supercharge*

© 2020 Loveland Agri Products. Always read and follow label directions.
Liberate is a registered trademark of Loveland Agri Products.

Trial Protocol

Treatment		Applied Rate
T1	Untreated	-
T2	Achieve + Liberate	400gm/ ha + 0.5%
T3	Achieve + Hasten	400gm/ ha + 1.0%
T4	Achieve + MSO with LECI-TECH	400gm/ ha + 1.0%
T5	Achieve + Supercharge	400gm/ ha + 0.75%

Achieve: 400g/ kg Tralkoxydim

© 2020 Loveland Agri Products. Always read and follow label directions.
Liberate is a registered trademark of Loveland Agri Products.

Phytotoxicity %

Treatment		Applied Rate	14 DAA	21 DAA	59 DAA
T1	Untreated	-	0	0	0
T2	Achieve + Liberate	400gm/ ha + 0.5%	0	0	0
T3	Achieve + Hasten	400gm/ ha + 1.0%	5	4.16	0
T4	Achieve + MSO with LECI-TECH	400gm/ ha + 1.0%	7.5	7.3	0
T5	Achieve + Supercharge	400gm/ ha + 0.75%	1.25	0	0

LSD (P=0.05) = 0.864 CV = 39.63

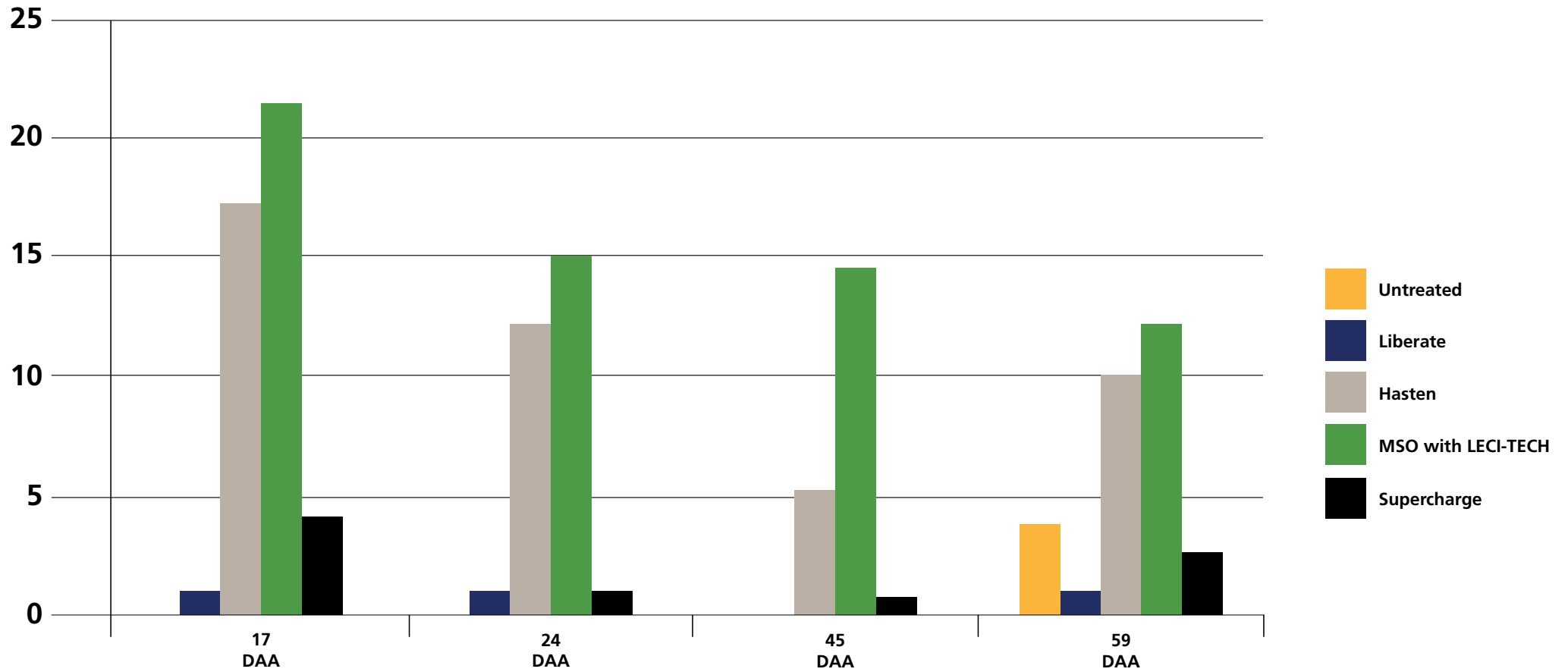
© 2020 Loveland Agri Products. Always read and follow label directions.
Liberate is a registered trademark of Loveland Agri Products.

Crop Biomass Reduction %

Treatment		Applied Rate	17 DAA	24 DAA	45 DAA
T1	Untreated	-	0	0	0
T2	Achieve + Liberate	400gm/ ha + 0.5%	1.25	1.25	0
T3	Achieve + Hasten	400gm/ ha + 1.0%	17.5	12.5	5.18
T4	Achieve + MSO with LECI-TECH	400gm/ ha + 1.0%	21.25	15	14.59
T5	Achieve + Supercharge	400gm/ ha + 0.75%	3.75	1.25	0.75
		LSD (P=0.05)	3.37	5.49	1.15t
		CV	25.02	59.41	42.28

© 2020 Loveland Agri Products. Always read and follow label directions.
Liberate is a registered trademark of Loveland Agri Products.

Crop Biomass Reduction %



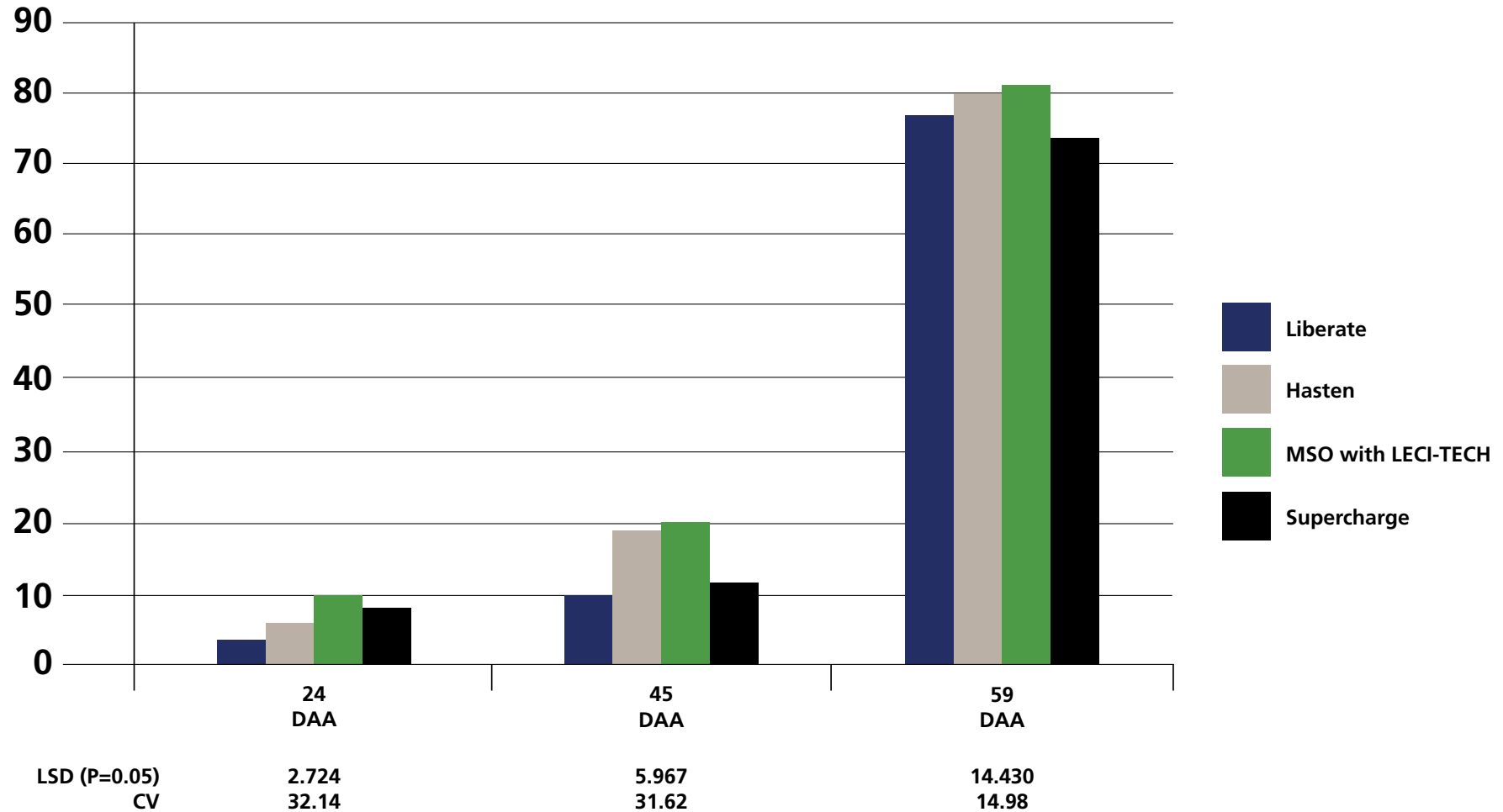
© 2020 Loveland Agri Products. Always read and follow label directions.
Liberate is a registered trademark of Loveland Agri Products.

ARG Plant Death %

Treatment		Applied Rate	24 DAA	45 DAA	59 DAA
T1	Untreated	-	0	0	0
T2	Achieve + Liberate	400gm/ ha + 0.5%	3.75	10.00	76.25
T3	Achieve + Hasten	400gm/ ha + 1.0%	6.25	18.75	80.00
T4	Achieve + MSO with LECI-TECH	400gm/ ha + 1.0%	10.00	20.00	81.25
T5	Achieve + Supercharge	400gm/ ha + 0.75%	7.50	12.50	75.00
		LSD (P=0.05)	2.724	5.967	14.430
		CV	32.14	31.62	14.98

© 2020 Loveland Agri Products. Always read and follow label directions.
Liberate is a registered trademark of Loveland Agri Products.

ARG Plant Death %



© 2020 Loveland Agri Products. Always read and follow label directions.
Liberate is a registered trademark of Loveland Agri Products.

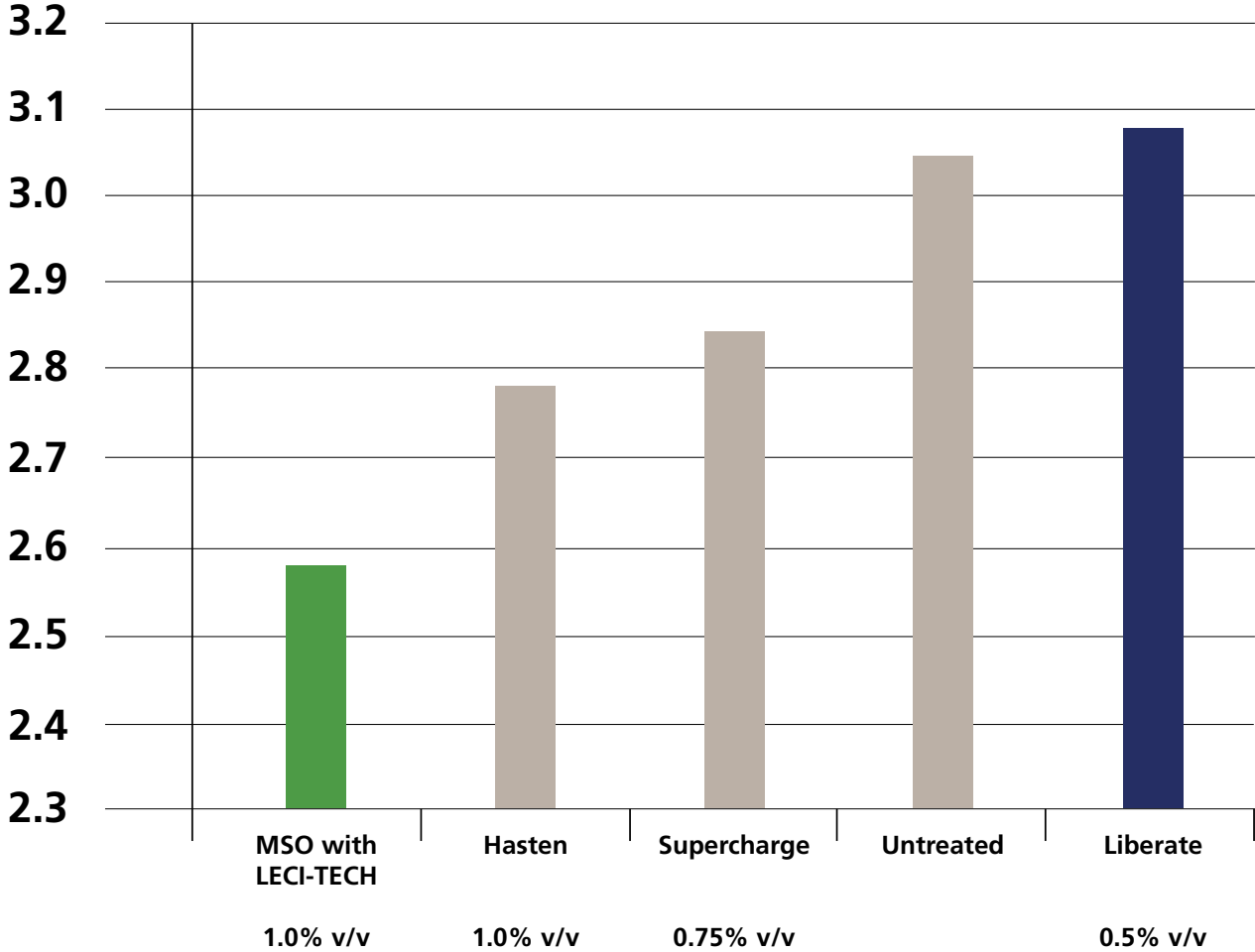
Wheat Yield - t/ ha

	Treatment	Applied Rate	Yield t/ ha
T1	Untreated	-	3.04
T2	Achieve + Liberate	400gm/ ha + 0.5%	3.07
T3	Achieve + Hasten	400gm/ ha + 1.0%	2.78
T4	Achieve + MSO with LECI-TECH	400gm/ ha + 1.0%	2.58
T5	Achieve + Supercharge	400gm/ ha + 0.75%	2.84

LSD (P=0.05) = 0.277 CV = 6.15

© 2020 Loveland Agri Products. Always read and follow label directions.
Liberate is a registered trademark of Loveland Agri Products.

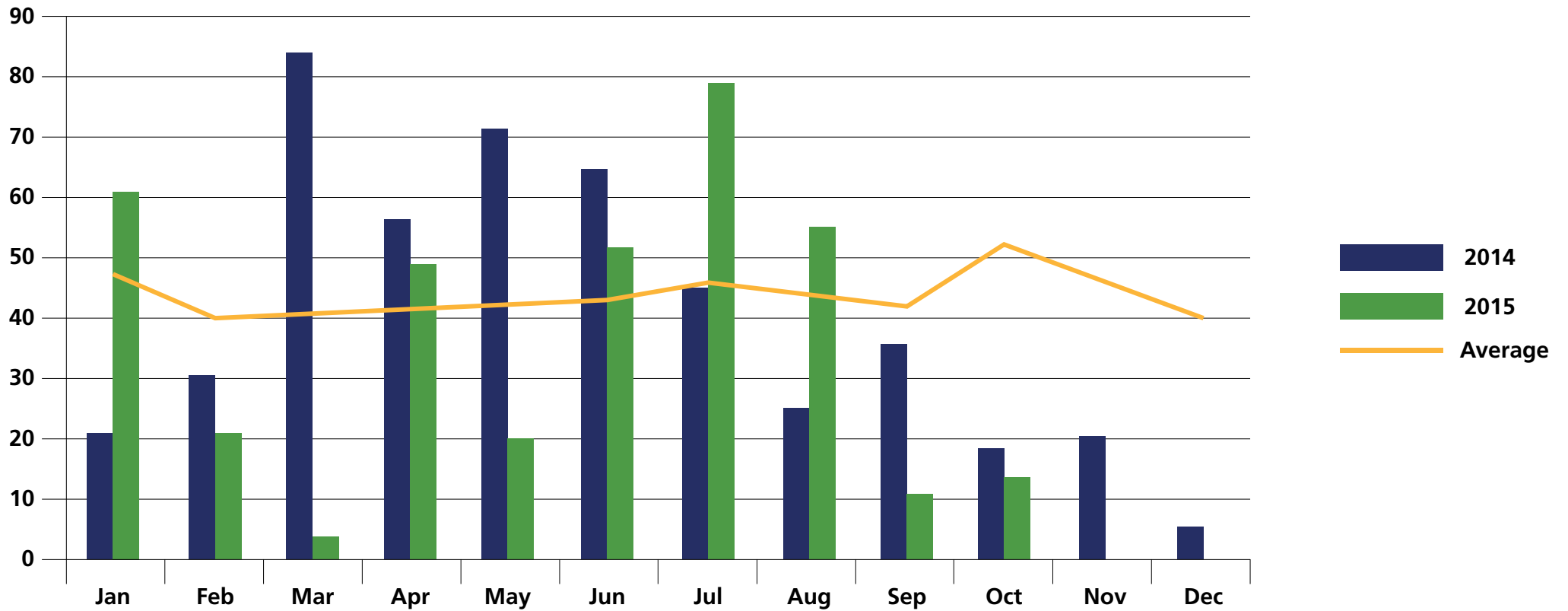
Wheat Yield - t/ ha



$LSD (P=0.05) = 0.277$ $CV = 6.15$

© 2020 Loveland Agri Products. Always read and follow label directions.
Liberate is a registered trademark of Loveland Agri Products.

Temora - Rainfall (mm)



© 2020 Loveland Agri Products. Always read and follow label directions.
Liberate is a registered trademark of Loveland Agri Products.

Conclusions

- Liberate had the lowest biomass reduction of the treatments applied
- Liberate yielded 230kg/ ha more than Supercharge
- Supercharge had slightly elevated reduction in biomass than Liberate
- Hasten had greater reduction in biomass Liberate
- MSO with LECI-TECH had the highest reduction in biomass at all stages

© 2020 Loveland Agri Products. Always read and follow label directions.
Liberate is a registered trademark of Loveland Agri Products.