



Loveland
AGRI PRODUCTS™

Trial Data

Maximum N-Pact - Canola

York, WA

Trial Setup

- Fully randomised & replicated plot work - 6 replicates
- Plot size = 2.5m X 10m

Planting date: *12/05/2014*

Site: *York, WA*

Variety: *Snapper TT @ 3kg/ ha*

GSP: *K-Till Mn 120kg/ ha + Urea 110kg/ ha*

© 2020 Loveland Agri Products. Always read and follow label directions.
Maximum N-Pact is a registered trademark of Loveland Agri Products.

Trial Protocol

| Treatment | Rate/ ha | Timing |
|----------------------|----------|--------------------------|
| GSP | - | - |
| GSP + Maximum N-Pact | 10L | 4 - 6 Leaf |
| GSP + UAN | 40L | 4 - 6 Leaf |
| GSP + Maximum N-Pact | 10L | Prior to stem elongation |
| GSP + UAN | 40L | Prior to stem elongation |
| GSP + Maximum N-Pact | 10L | End of flowering |
| GSP + UAN | 40L | End of flowering |

Maximum N-Pact: 29-0-0 w/v

UAN: 42-0-0 w/v

© 2020 Loveland Agri Products. Always read and follow label directions.
Maximum N-Pact is a registered trademark of Loveland Agri Products.

Canola Yield - t/ ha

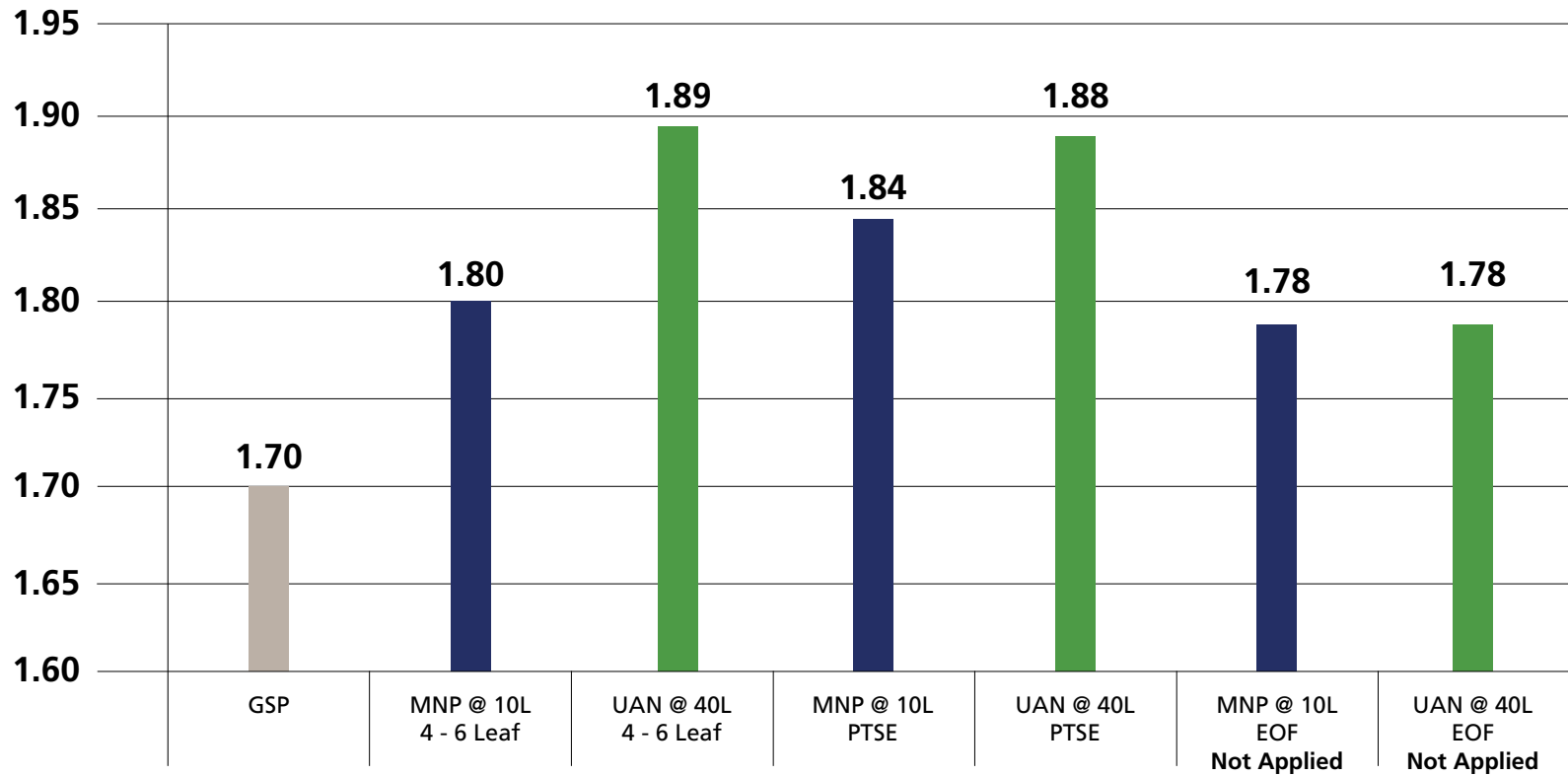
| Treatment | Rate/ ha | Timing | Yield t/ ha | Oil % |
|----------------------|----------|--------------------------|-------------|-------|
| GSP | - | - | 1.70 | 50.8 |
| GSP + Maximum N-Pact | 10L | 4 - 6 Leaf | 1.80 | 50.7 |
| GSP + UAN | 40L | 4 - 6 Leaf | 1.88 | 50.3 |
| GSP + Maximum N-Pact | 10L | Prior to stem elongation | 1.84 | 50.4 |
| GSP + UAN | 40L | Prior to stem elongation | 1.88 | 50.4 |
| GSP + Maximum N-Pact | 10L | End of flowering | 1.78** | 50.8 |
| GSP + UAN | 40L | End of flowering | 1.78** | 50.8 |

** Not applied because canola crop was too tall to apply the treatment with standard hand-boom.

LSD (P=.05) = 0.122 CV = 5.7

© 2020 Loveland Agri Products. Always read and follow label directions.
Maximum N-Pact is a registered trademark of Loveland Agri Products.

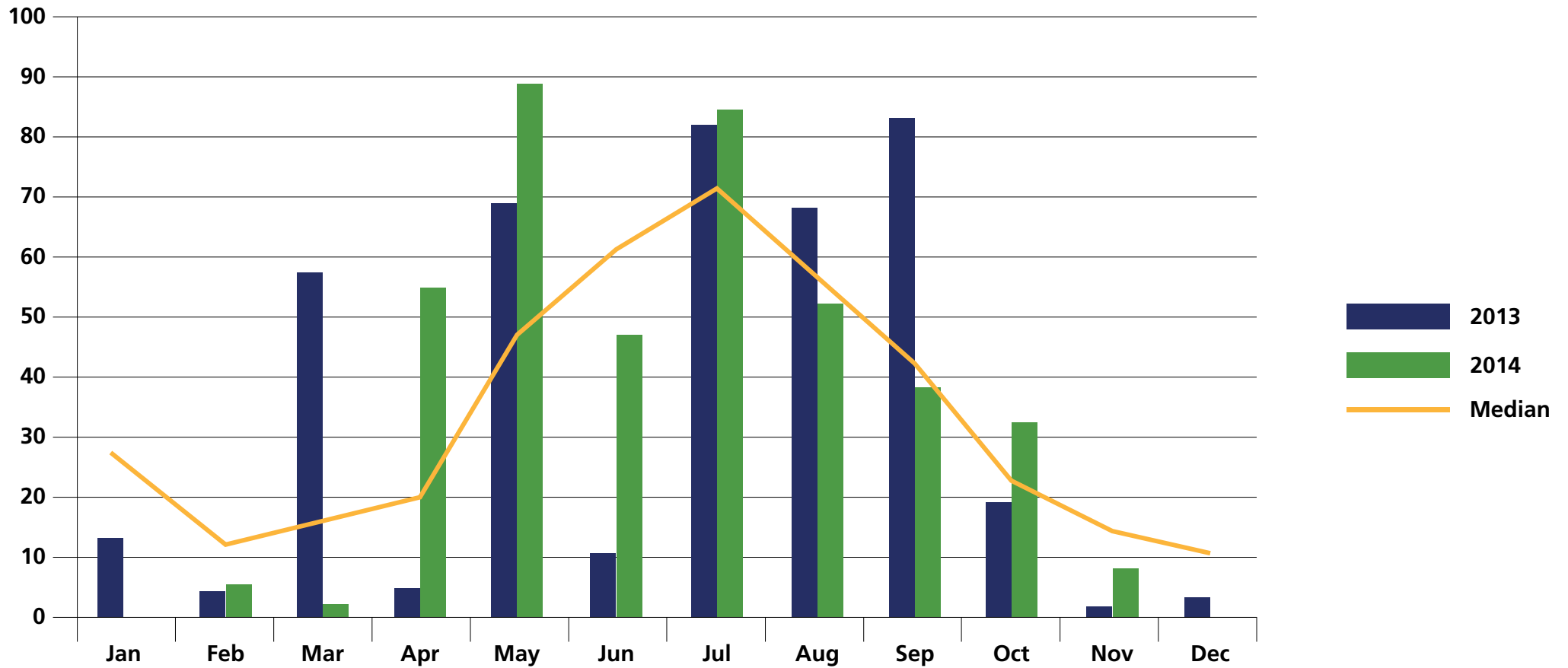
Canola Yield - t/ Ha



$LSD (P=.05) = 0.122$ $CV = 5.7$

© 2020 Loveland Agri Products. Always read and follow label directions.
Maximum N-Pact is a registered trademark of Loveland Agri Products.

York - Rainfall (mm)



© 2020 Loveland Agri Products. Always read and follow label directions.
Maximum N-Pact is a registered trademark of Loveland Agri Products.

Conclusions

- This trial demonstrates the efficiency of 10L/ ha Maximum N-Pact compared to 40L/ ha UAN with no significant differences in yield or oil percentage
- Maximum N-Pact offers excellent efficiency when it is applied to crops which have adequate baseline nutrition

© 2020 Loveland Agri Products. Always read and follow label directions.
Maximum N-Pact is a registered trademark of Loveland Agri Products.