



Loveland
AGRI PRODUCTS™

Trial Data

Awaken Foliar - Wheat

York, WA

Trial Setup

- Fully randomised and replicated plot work - 6 replicates
- Plot size = 2.5m X 10m

Planting date: *22/05/2014*

Site: *York, WA*

Variety: *Calingiri @ 80kg/ ha*

GSP: *K-Till Mn 120kg/ ha + Urea 125kg/ ha*

© 2020 Loveland Agri Products. Always read and follow label directions.
Awaken is a registered trademark of Loveland Agri Products.

Trial Protocol

Treatment	Rate/ ha	Timing
GSP	-	-
GSP + Awaken	1.2L	Z15 - 22
GSP + Awaken	2.4L	Z15 - 22

Awaken: 20-0-2 + micronutrients w/v

© 2020 Loveland Agri Products. Always read and follow label directions.
Awaken is a registered trademark of Loveland Agri Products.

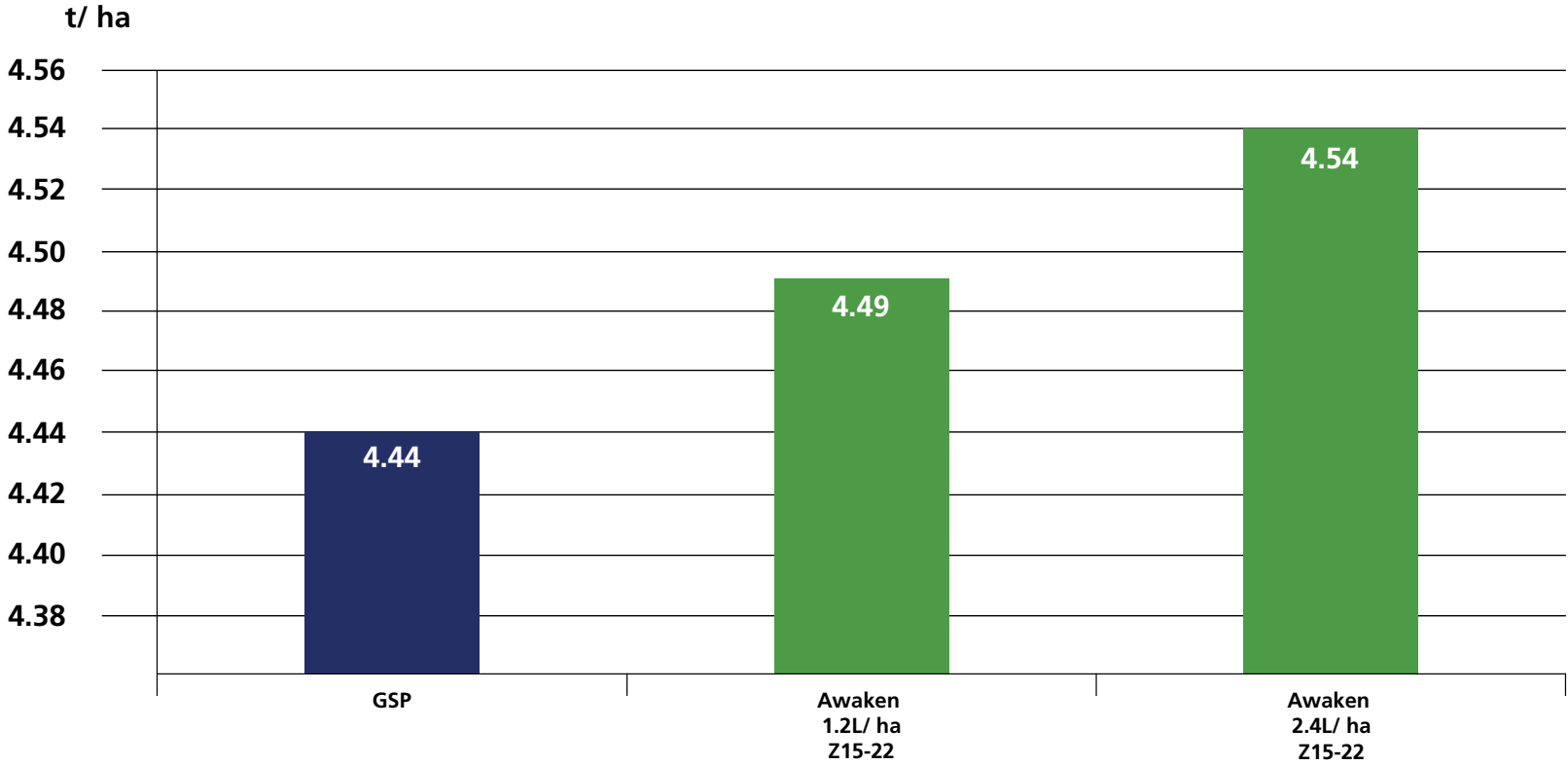
Wheat Yield - t/ ha

Treatment	Rate/ ha	Yield t/ ha	Protein %
GSP	-	4.44	9.1
GSP + Awaken - Z15-22	1.2L	4.49	9.2
GSP + Awaken - Z15-22	2.4L	4.54	9.1

LSD (P=.05) = 0.384 CV = 6.6

© 2020 Loveland Agri Products. Always read and follow label directions.
Awaken is a registered trademark of Loveland Agri Products.

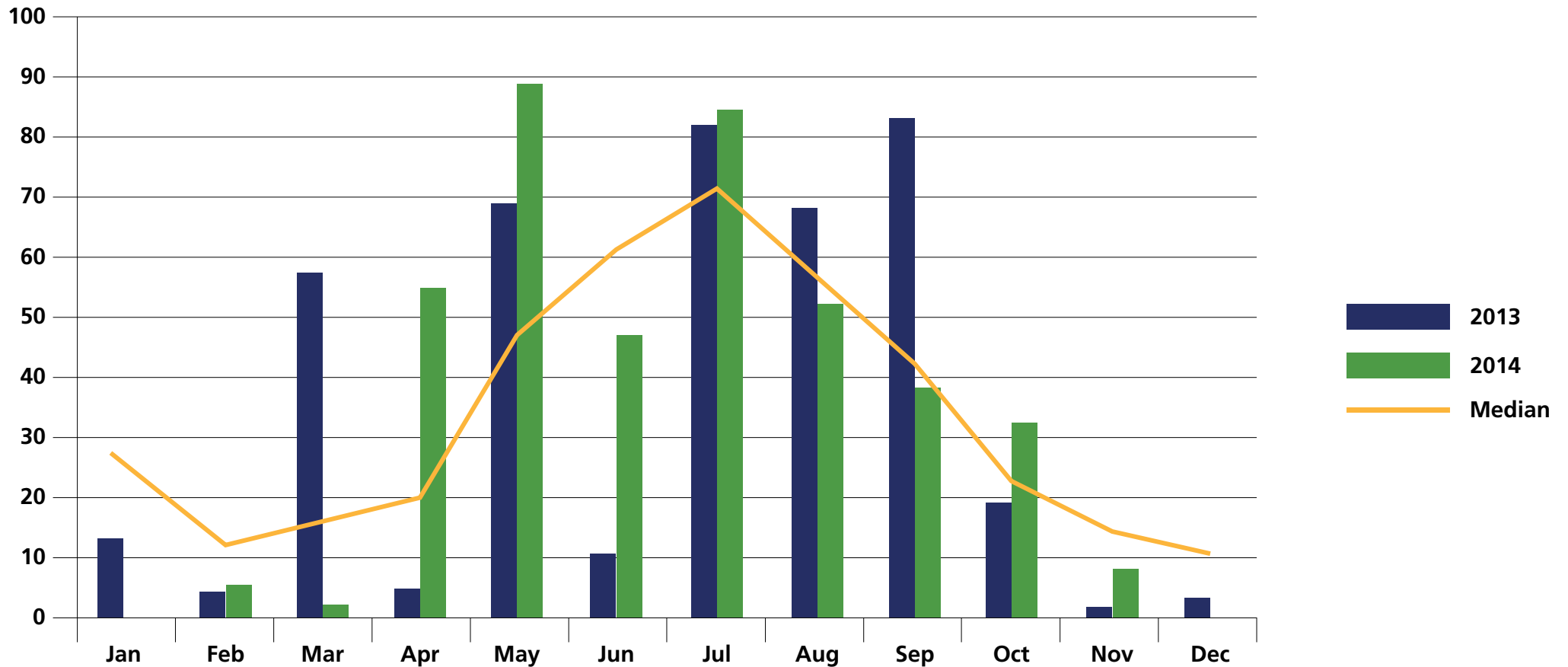
Wheat Yield - t/ ha



$LSD (P=.05) = 0.384$ $CV = 6.6$

© 2020 Loveland Agri Products. Always read and follow label directions. Awaken is a registered trademark of Loveland Agri Products.

York - Rainfall (mm)



© 2020 Loveland Agri Products. Always read and follow label directions.
Awaken is a registered trademark of Loveland Agri Products.

Conclusions

- In this trial, both rates of Awaken applied as a foliar showed an increase in yield when applied over and above the grower standard practice
- This trend has been seen in wheat in previous years over a number of trials in other geographical areas of Australia
- Protein levels for all treatments were similar