



Loveland
AGRI PRODUCTS™

Trial Data

Awaken Foliar - Canola

York, WA

Trial Setup

- Fully randomised and replicated plot work - 6 replicates
- Plot size = 2.5m X 10m

Planting date: *12/05/2014*

Site: *York, WA*

Variety: *Snapper TT @ 3kg/ ha*

GSP: *K-Till Mn 120kg/ ha + Urea 110kg/ ha*

© 2020 Loveland Agri Products. Always read and follow label directions.
Awaken is a registered trademark of Loveland Agri Products.

Trial Protocol

| Treatment | Rate/ ha | Timing |
|--------------|----------|------------|
| GSP | - | - |
| GSP + Awaken | 1.2L | 3 - 6 Leaf |
| GSP + Awaken | 2.4L | 3 - 6 Leaf |
| GSP + Awaken | 4.7L | 3 - 6 Leaf |

Awaken: 20-0-2 + micronutrients w/v

© 2020 Loveland Agri Products. Always read and follow label directions.
Awaken is a registered trademark of Loveland Agri Products.

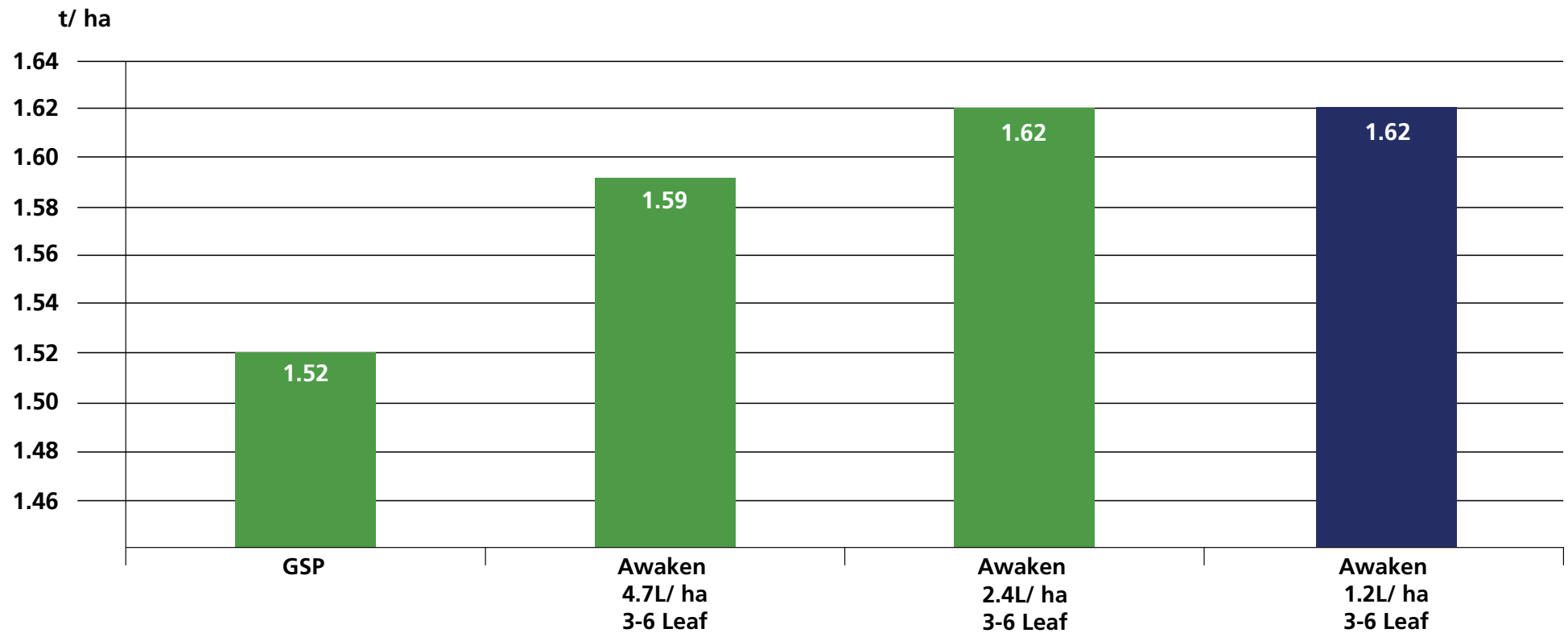
Canola Yield - t/ ha

| Treatment | Rate/ ha | Yield t/ ha | Oil % |
|-------------------------|----------|-------------|-------|
| GSP | - | 1.52 | 51.3 |
| GSP + Awaken - 3-6 Leaf | 1.2L | 1.62 | 50.8 |
| GSP + Awaken - 3-6 Leaf | 2.4L | 1.62 | 51.0 |
| GSP + Awaken - 3-6 Leaf | 4.7L | 1.59 | 51.4 |

LSD (P=.05) = 0.188 CV = 6.7

© 2020 Loveland Agri Products. Always read and follow label directions.
Awaken is a registered trademark of Loveland Agri Products.

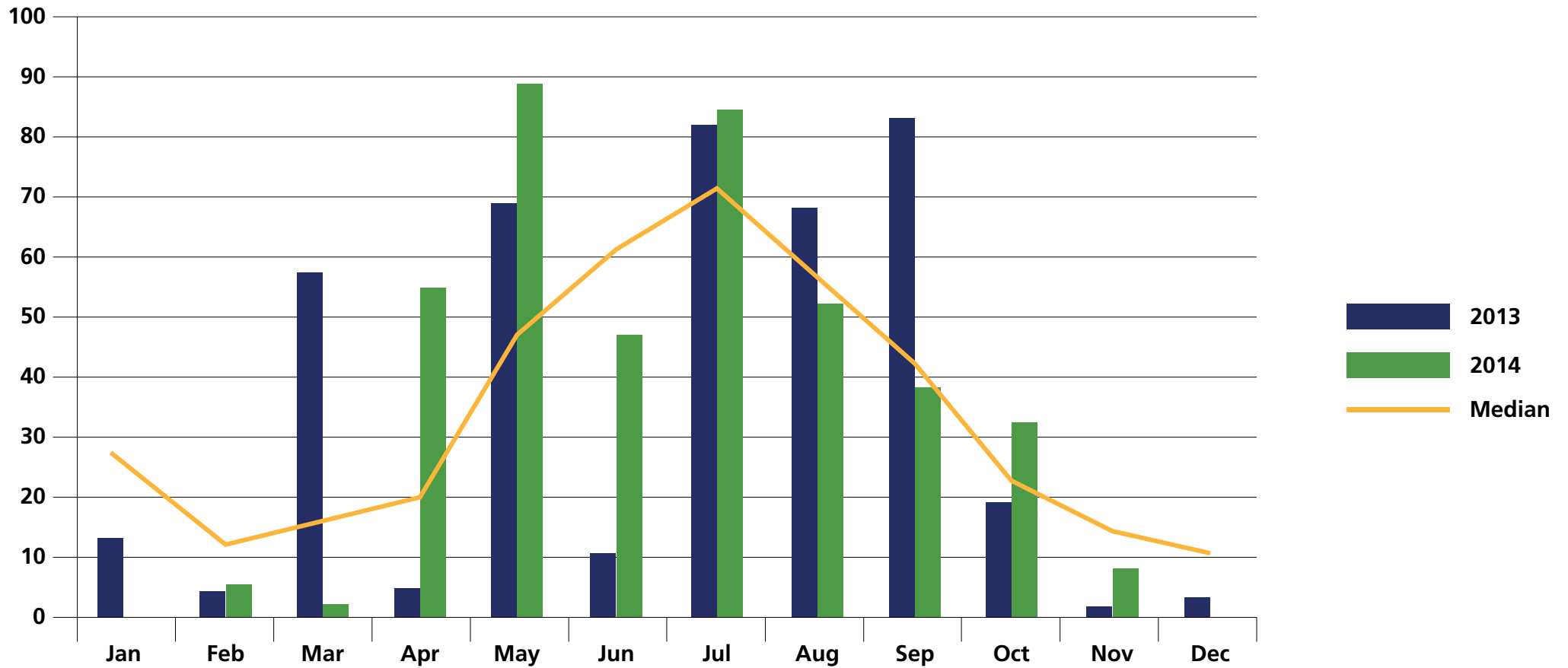
Canola Yield - t/ ha



$LSD (P=.05) = 0.188$ $CV = 6.7$

© 2020 Loveland Agri Products. Always read and follow label directions.
Awaken is a registered trademark of Loveland Agri Products.

York - Rainfall (mm)



© 2020 Loveland Agri Products. Always read and follow label directions.
Awaken is a registered trademark of Loveland Agri Products.

Conclusions

- Early foliar applications of Awaken are demonstrating a positive yield increase across all rate ranges
- The *1.2L/ha* rate of Awaken is the most commercially viable treatment based on yield and ROI
- Awaken is providing a balanced micronutrient package early in the season to boost plant growth and yield potential