



Loveland
AGRI PRODUCTS™

Trial Data

Awaken ST - Canola

Moora, WA

Trial Setup

- Fully randomised and replicated plot work - 3 replicates
- Plot size = 18m X 1.6m
- This trial was conducted alongside a TT Canola cultivar trial

Planting date: *06/05/2015*

Application date: *06/05/2015 (at seeding)*

Site: *Moora, WA*

Variety: *Stingray TT canola treated with Awaken ST @ 5L/t*

GSP: *K Till Extra @ 100kg/ha + Urea @ 100kg/ha + UAN @ 40L/ha*

© 2020 Loveland Agri Products. Always read and follow label directions.
Awaken is a registered trademark of Loveland Agri Products.

Trial Protocol

Treatment		Seed Rate	Applied Rate
T1	Snapper	2.6kg/ ha	-
T2	Sturt	2.9kg/ ha	-
T3	Stingray	2.4kg/ ha	-
T4	Stingray + Awaken ST	2.4kg/ ha	Awaken ST @ 5.0L/ tn
T5	Hyola 559 TT	2.6kg/ ha	-
T6	Hyola 525 RT	2.3kg/ ha	-
T7	Bonito	2.6kg/ ha	-
T8	Gem	2.6kg/ ha	-
T9	945 T 01	2.5kg/ ha	-
T10	SFR 65 - 008	2.8kg/ ha	-
T11	Atomic	2.4kg/ ha	-

© 2020 Loveland Agri Products. Always read and follow label directions.
Awaken is a registered trademark of Loveland Agri Products.

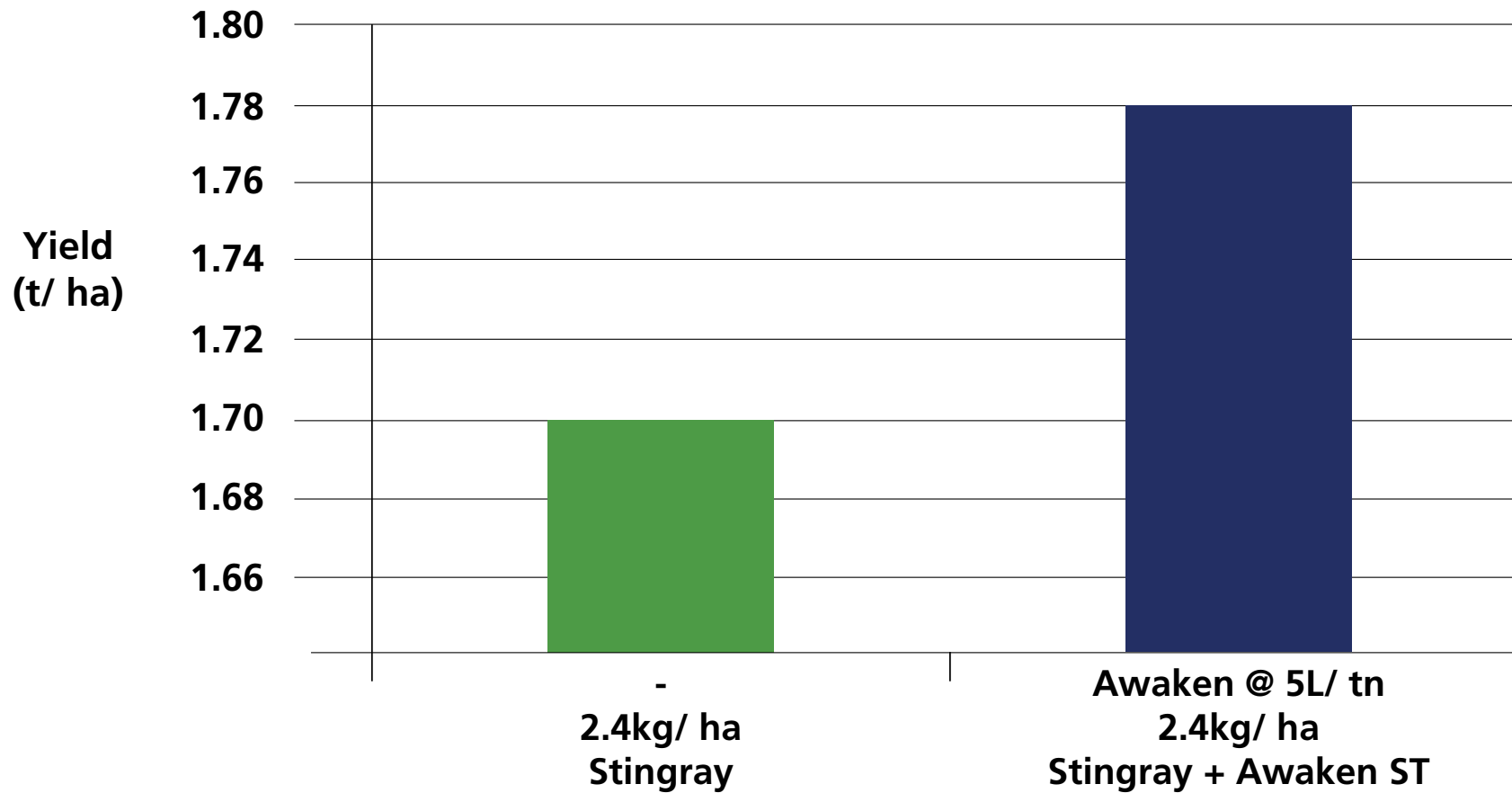
Canola - Grain Yield

Treatment		Seed Rate	Applied Rate	Yield t/ ha
T1	Snapper	2.6kg/ ha	-	1.53
T2	Sturt	2.9kg/ ha	-	1.50
T3	Stingray	2.4kg/ ha	-	1.70
T4	Stingray + Awaken	2.4kg/ ha	Awaken ST @ 5.0L/ tn	1.78
T5	Hyola 559 TT	2.6kg/ ha	-	1.60
T6	Hyola 525 RT	2.3kg/ ha	-	1.45
T7	Bonito	2.6kg/ ha	-	1.63
T8	Gem	2.6kg/ ha	-	1.39
T9	945 T 01	2.5kg/ ha	-	1.42
T10	SFR 65 - 008	2.8kg/ ha	-	1.35
T11	Atomic	2.4kg/ ha	-	1.34

LSD (P=0.05) = 0.095 CV = 3.69

© 2020 Loveland Agri Products. Always read and follow label directions.
Awaken is a registered trademark of Loveland Agri Products.

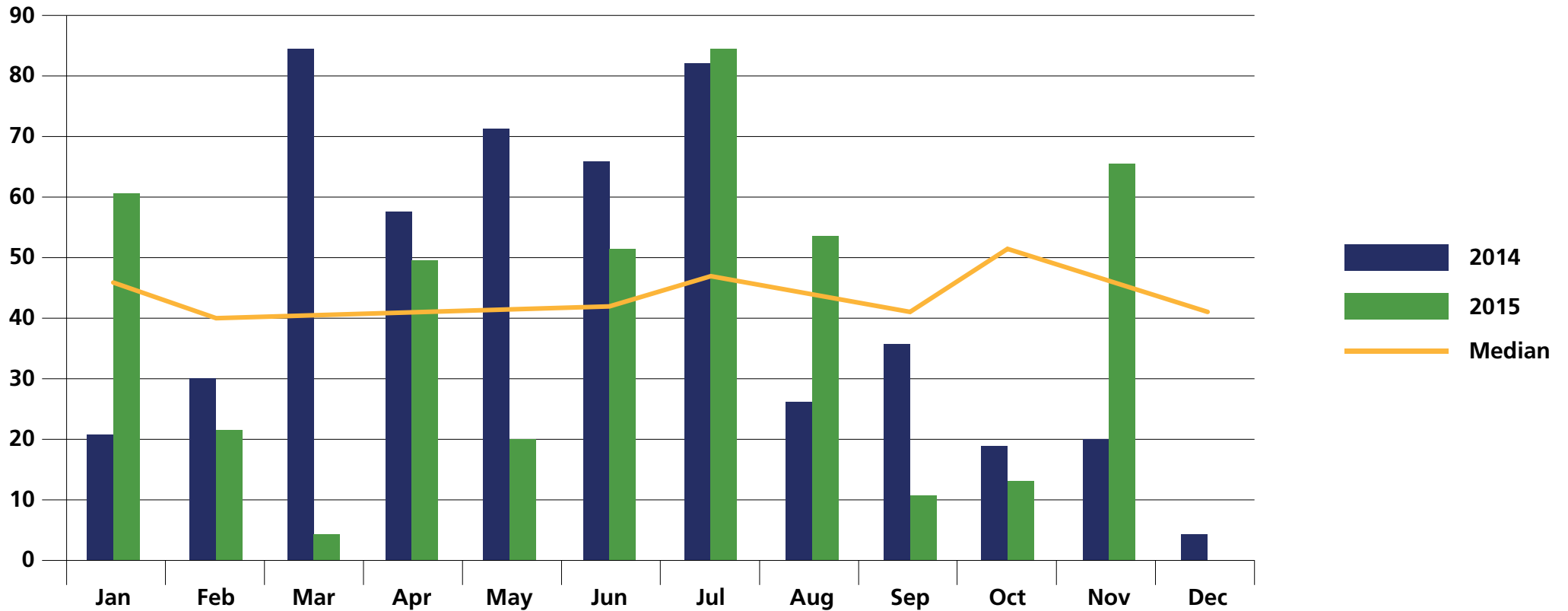
Canola - Grain Yield



LSD (P=0.05) = 0.095 CV = 3.69

© 2020 Loveland Agri Products. Always read and follow label directions.
Awaken is a registered trademark of Loveland Agri Products.

Moora - Rainfall (mm)



© 2020 Loveland Agri Products. Always read and follow label directions.
Awaken is a registered trademark of Loveland Agri Products.

Conclusions

- 2015 was an average season at Moora
- Awaken ST has shown early vigour what has translated into an 80kg grain yield improvement
- At a cost of \$1/ hato treat canola seed with Awaken ST, this is very profitable